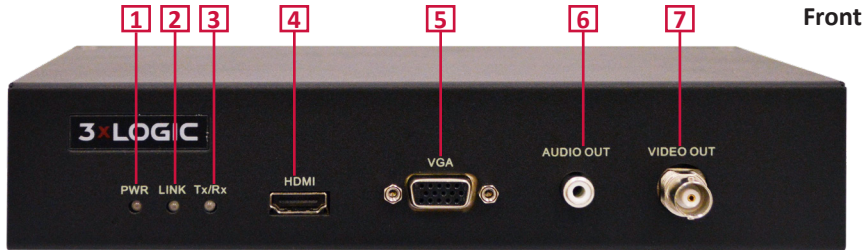
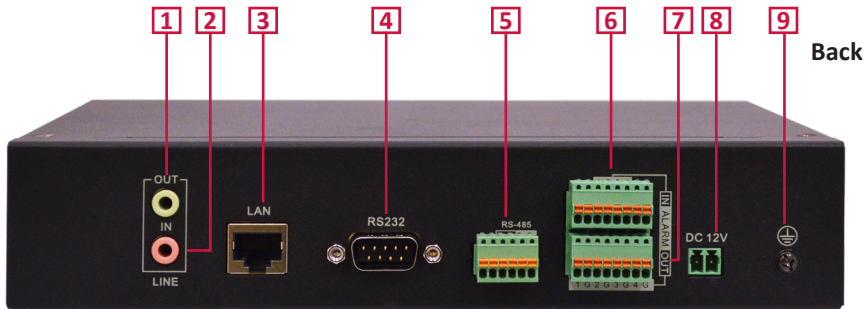


Panel Connection Diagram | VH-DECODER-1



1	Power Indicator	5	VGA Output
2	Network Connection Indicator	6	Audio Output
3	Data Transmission Indicator	7	BNC Video Output
4	HDMI Output		

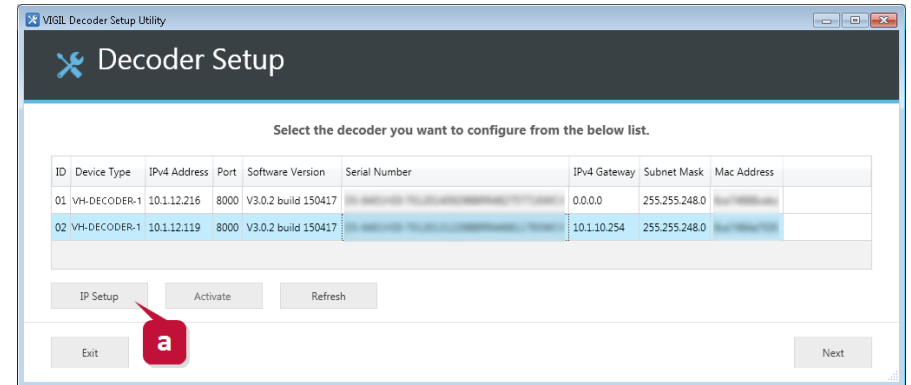


1	Audio Line Out	6	Alarm In
2	Audio Line In	7	Alarm Out
3	Ethernet Connection	8	Power Supply
4	RS-232 Serial Interface	9	Grounding
5	RS-485 Serial Interface		

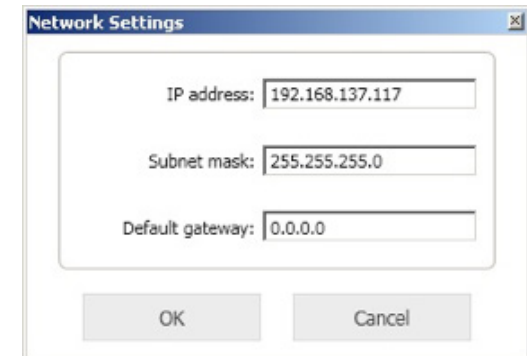
Quick Start Guide

Getting Started | VH-DECODER-1

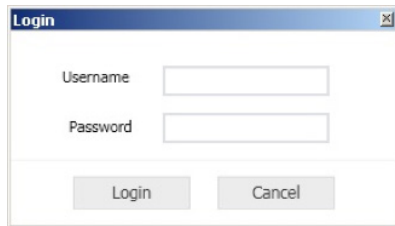
1. Open the VIGIL Decoder Setup Utility
 - a. The Decoder Utility must be installed first and can be found on 3xLOGIC website or through a 3xLOGIC Sales Representative
 - b. Located at VIGIL Server Settings > Decoder tab or Start Menu > All Programs > VIGIL > Utilities
2. The Setup Utility will automatically find all 3xLOGIC decoders on the same network that the Server is on.



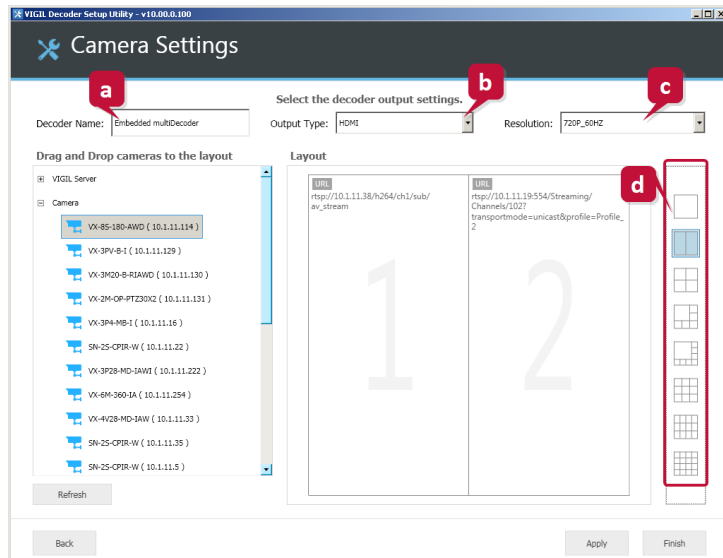
- a. To change the IP of the decoder, click the **"IP Setup"** button and enter the desired network information in the screen.



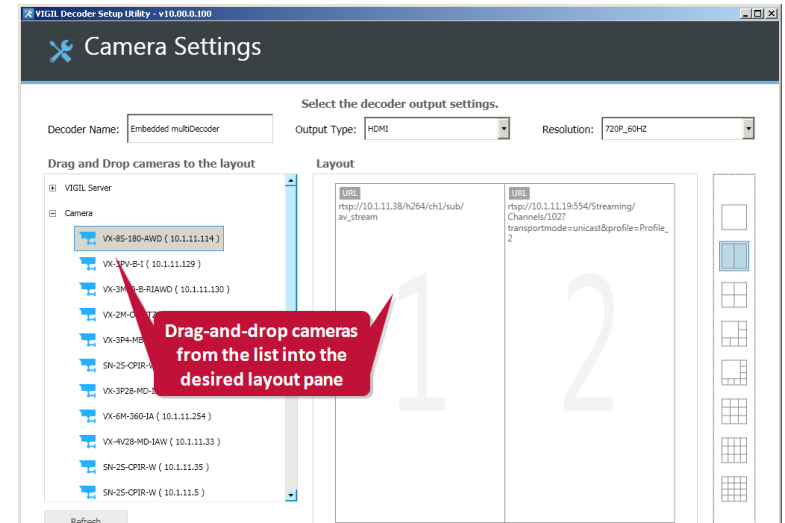
- To continue setup, click “Next” and enter the default username / password of **admin / 12345** to login. If you do not have the credentials, contact your network admin.



- The main camera settings page will deploy. To begin:
 - Name your decoder. The default name must be changed.
 - Select an output type. Only one output can be active.
 - Select the resolution of the monitor.
 - Choose a camera layout from the right-side layout bar.



- The Setup Utility will find all 3xLOGIC Servers and cameras available on your network. They will be displayed in the left-hand list. Drag and drop cameras into the panes in which you wish them to reside.
 - Note:** For cameras not connected to a Server, you may be prompted to supply the camera’s username and password.



- After clicking “Finish” you will have the option to restart the Setup Utility or Exit the program.

