

## VISIX™ 3MP IP Outdoor Dome Camera

This three (3) megapixel IP camera from 3xLOGIC provides high-definition video at a full 2048 x 1536 pixels for outdoor video surveillance applications requiring superior clarity and detail. It is ideal for locations such as schools, government, hotels, banks, museums and supermarkets.

This high-definition camera is packed with all the features you might need for nearly any application including: Motorized lens, intrusion detection; weather and impact protection; SD/SDHC/SDXC card slot for local recording; motion detection; low-light day/night functionality; and compatibility with a wide variety of standardized network protocols.

The convenient and aesthetically pleasing dome camera format allows unobtrusive and easy installation in a wide variety of areas. In addition, this camera is designed to continue functioning at top performance at temperatures as low as -30°C (-22°F) and as high as 60°C (140°F) allowing a wide range of applications.

It comes standard with a 2.8-12mm vari-focal lens providing support for most applications. Day / Night operation allows use in varying lighting conditions down to 0.1 lux without the need for electronic gain providing better night time video.

Dual streaming permits recording at the highest quality while allowing fast live viewing from anywhere in the world regardless of available bandwidth. In addition, with full support for both variable bit rate and variable frame rate, the quality of each stream can be matched to available bandwidth for the most effective video quality possible.

When coupled with the VIGIL Series of digital video recorders and Video Management System (VMS) software from 3xLOGIC, superior point-to-point hardware compression and decompression allows for maximum performance of streamed live video providing better video quality, more concurrent streams and a lower overall hit to CPU performance.

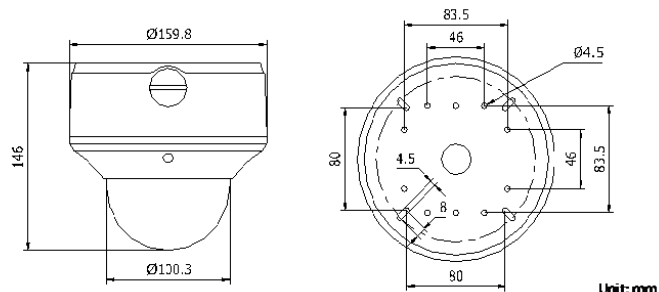


### Key Features and Benefits

Feature	Value
Lens	2.8mm-12mm
Resolution (Megapixels)	3
2048 x 1536 Resolution	✓
Variable angle of view (91.2° - 28.3°)	✓
Infrared (Low-Light/No-Light)	✓
Dual Streams	✓
H.264/MPEG4/MJPEG Compression	✓
Weather & Impact-Resistant	✓
Motorized Focus Lens	✓

## CAMERA

<b>Image Sensor:</b>	1/3 inch Progressive Scan CMOS
<b>Lens:</b>	2.8-12mm @ F1.4 Angle of view: 91.2-28.3° motorized
<b>Min. Illumination:</b>	0.1 Lux @ (F1.2) Auto Gain Control on 0.14 Lux @ (F1.4) Auto Gain Control on 0 lux with IR
<b>Auto Iris:</b>	DC drive
<b>Day/Night:</b>	IR cut filter with auto switch
<b>IR Range:</b>	Up to 30 meters
<b>Shutter Times:</b>	1 second to 1/100,000 seconds
<b>Angle Adjustment:</b>	Pan: 0° - 355°, Tilt: 0° - 75°, Rotation: 0° - 355



Unit:mm



## COMPRESSION STANDARD

<b>Video Compression:</b>	H.264/MPEG-4/MJPEG
<b>Video Bit Rate:</b>	32 Kbps - 16 Mbps
<b>Audio Compression:</b>	G.711, G.726, MP2L2
<b>Dual Streams:</b>	Yes

## IMAGE

<b>Max. Image Resolution:</b>	2048(H) x 1536(V)
<b>Frame Rate:</b>	20 fps (2048x1536) 30 fps (1920x1080) 30 fps (1280x720)

## FUNCTIONS

<b>Alarm Triggers:</b>	Intrusion detection, Defocus detection, Motion detection, Face detection, Dynamic analysis, Tampering alarm, Network disconnect, IP address conflict, Storage exception
<b>Local Storage:</b>	Built-in SD, SDHC, SDXC card slot, up to 64GB
<b>Security:</b>	User Authentication, Watermark, IP address filtering, anonymous access, reset
<b>Protocols:</b>	TCP/IP, HTTP, DHCP, DNS, DDNS, NTP, RTP, RTSP, PPPoE, SMTP, SNMP, HTTPS, FTP, ICMP, UPnP, IGMP, 802.1X, QoS, IPv6, Bonjour
<b>System Compatibility:</b>	ONVIF, PSIA, CGI

## PHYSICAL

<b>Working Temperature:</b>	-30°C - 60°C (-22°F - 140°F); Humidity 95% max (non-condensing)
<b>Weather protection:</b>	IP66
<b>Impact Protection:</b>	IEC60068-2-75Eh, 50J, EN50102, up to IK10
<b>Dimensions (inches):</b>	6.29" x 5.75"
<b>Dimensions (mm):</b>	159 x 146
<b>Weight:</b>	4.62 lbs. / 2100 g

## ELECTRICAL

<b>Power Supply:</b>	24 VAC + - 10%, PoE (802.3af )
<b>Power Consumption:</b>	13W

## INTERFACE

<b>Communication:</b>	1 RJ45 10M/100M Ethernet port
<b>Video Output:</b>	1 Vp-p composite output (75 Ω/RCA)
<b>Alarm Input:</b>	2
<b>Alarm Output:</b>	2
<b>Audio Input:</b>	1-ch 3.5 mm audio interface, Mic in/Line in.
<b>Audio Output:</b>	1-ch 3.5 mm audio interface

## WARRANTY

Three (3) Year Return to Depot Parts and Labor Warranty

## CERTIFICATIONS

FCC, CE, UL

## PART NUMBER

<b>VX-3M-OD2-RIAWD:</b>	VISIX 3MP IP Outdoor Dome Camera
-------------------------	----------------------------------

## RECOMMENDED MOUNTS

<b>VX-PM-OD2:</b>	Pendant Mount Adaptor
<b>VX-WM-OD2:</b>	Wall Mount Adaptor
<b>VX-POLE:</b>	Pole Mount Adaptor
<b>VX-CM:</b>	Corner Mount Adaptor
<b>VX-WMJ-OD2:</b>	Wall Mount Adaptor with Junction Box