

# Discovery and Upgrade Tool

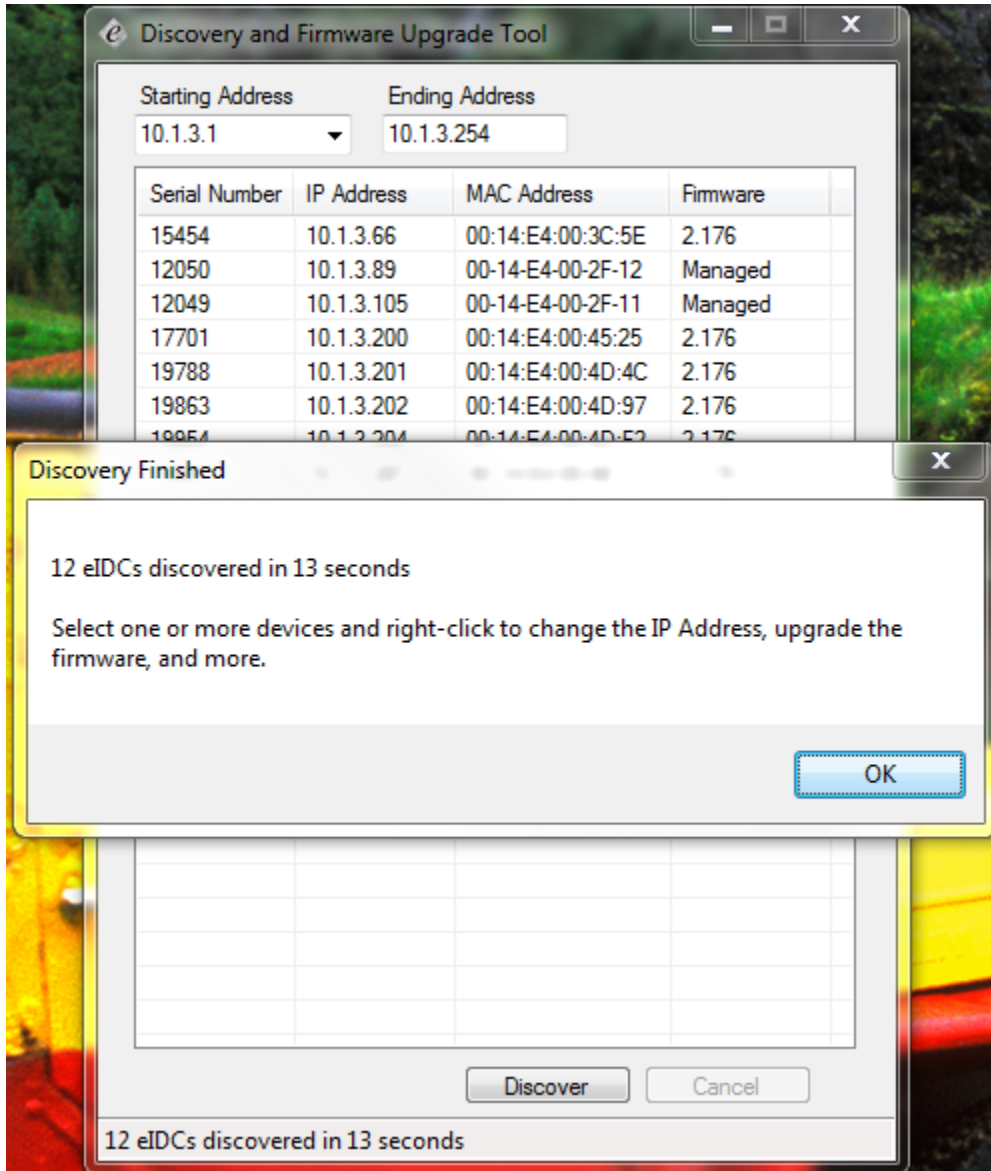
---

User Guide





Once the discovery is complete, you will get a message box telling you how many controllers were discovered. Click OK to close the message box.

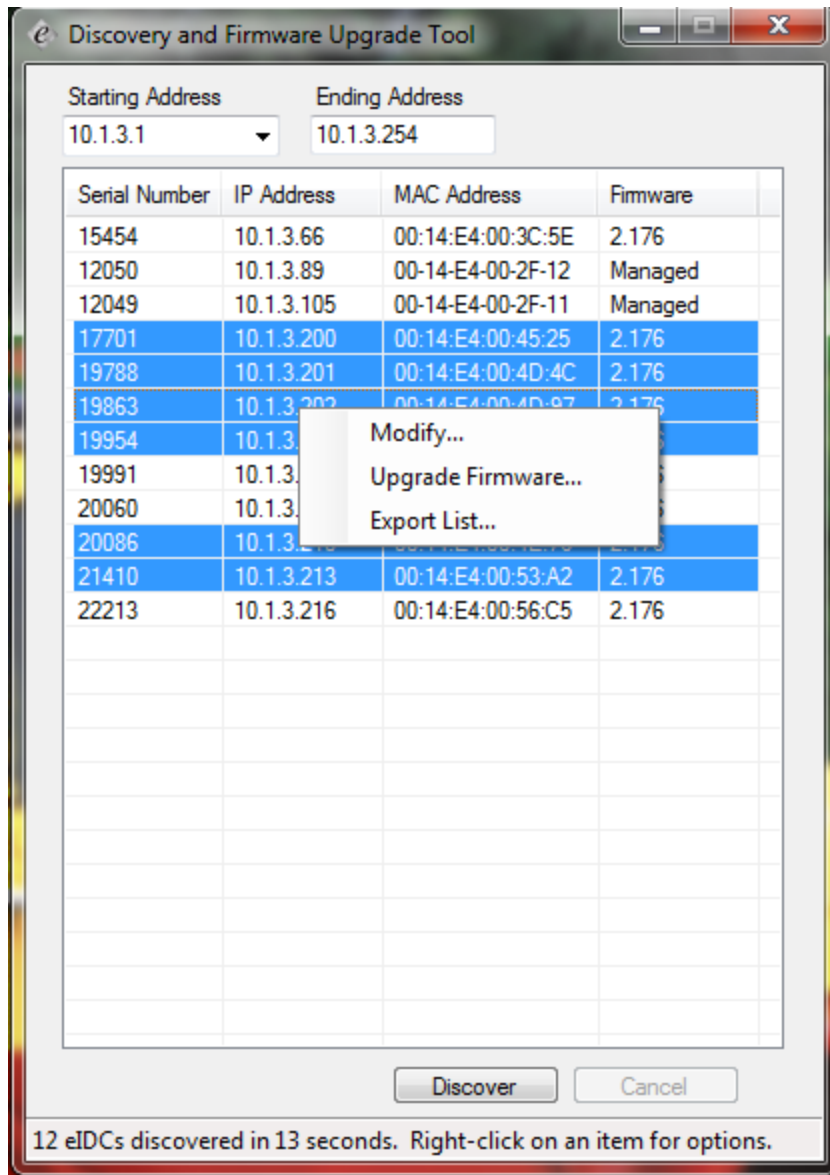


To perform any actions, select one or more controllers and right click. To select multiple controllers you can either CTRL-Click or Shift-Click.

CTRL-Click – Holding the Control key down, you can individually select any number of controllers.

Shift-Click – Click on one controller, then hold the Shift key and click on another controller. All controllers in between the two selected will be chosen as well.

Once you have selected the desired controllers, right click on one of the selected ones to see a menu of choices.



Modify – To change the ip address, switch the controllers between static and dynamic IP addresses, reset or reboot the controllers.

Upgrade Firmware - This will prompt you for the location of the firmware files you wish to update the controllers with.

Export List - To save out a list of the discovered controllers, choose this option.

## Modify

Selecting modify will present the following dialog

eIDCNetworkSetup

Current

IP Address 10.1.3.200

Serial Number 17701

MAC Address 00:14:E4:00:45:25

New

New IP Address 10.1.3.200

Subnet Mask 255.255.0.0

Gateway 10.1.1.1

DHCP

Reset  Reboot

Device Count 6  Batch

OK Cancel

Connected to 10.1.3.200

From here, you can choose to do any of the following:

1. Change the controllers from static to dynamic IP addressing
2. Change the controllers from dynamic to static IP addressing
3. Set the Gateway IP address
4. Set the Subnet mask
5. Soft reboot the controller
6. Reset the controller to factory defaults

## Upgrade Firmware

This will prompt you for the location of the firmware files you wish to update the controllers with. You must have unzipped the firmware files. The dialog is expecting the XML file included with the firmware update. Once you select the firmware, the utility will automatically start updating all selected controllers with that firmware. As each controller completes, the controller will be re-queried for the firmware version and it will be displayed in the Firmware column. Any result other than seeing the new firmware version displayed indicated that the update failed and the controller needs to be re-updated.

## **Export List**

To save out a list of the discovered controllers, choose this option.

If for some reason a controller is not discovered, try again and if it is still not found, try pinging the controller. If there is no response, re-power the controller and verify the IP address.