



IntelliM

Technical Support Center

Migrating Cardholders from Supervisor Plus to Intelli-M Access

Written By: BSlinker

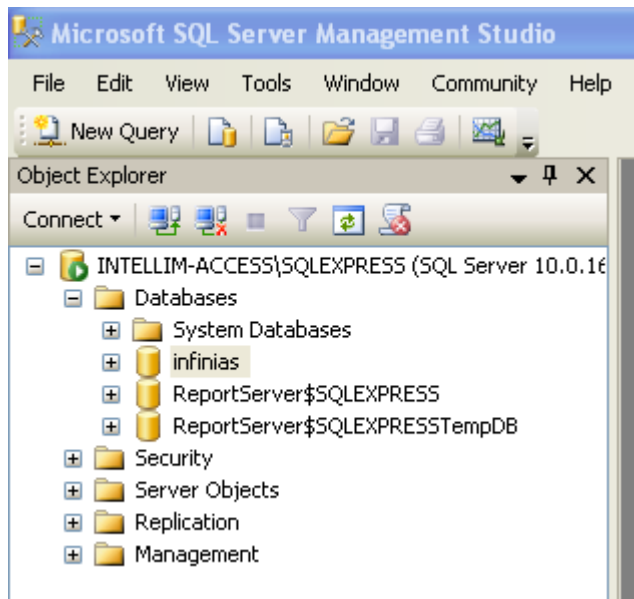
Edited By:

Rev: July 24, 2009

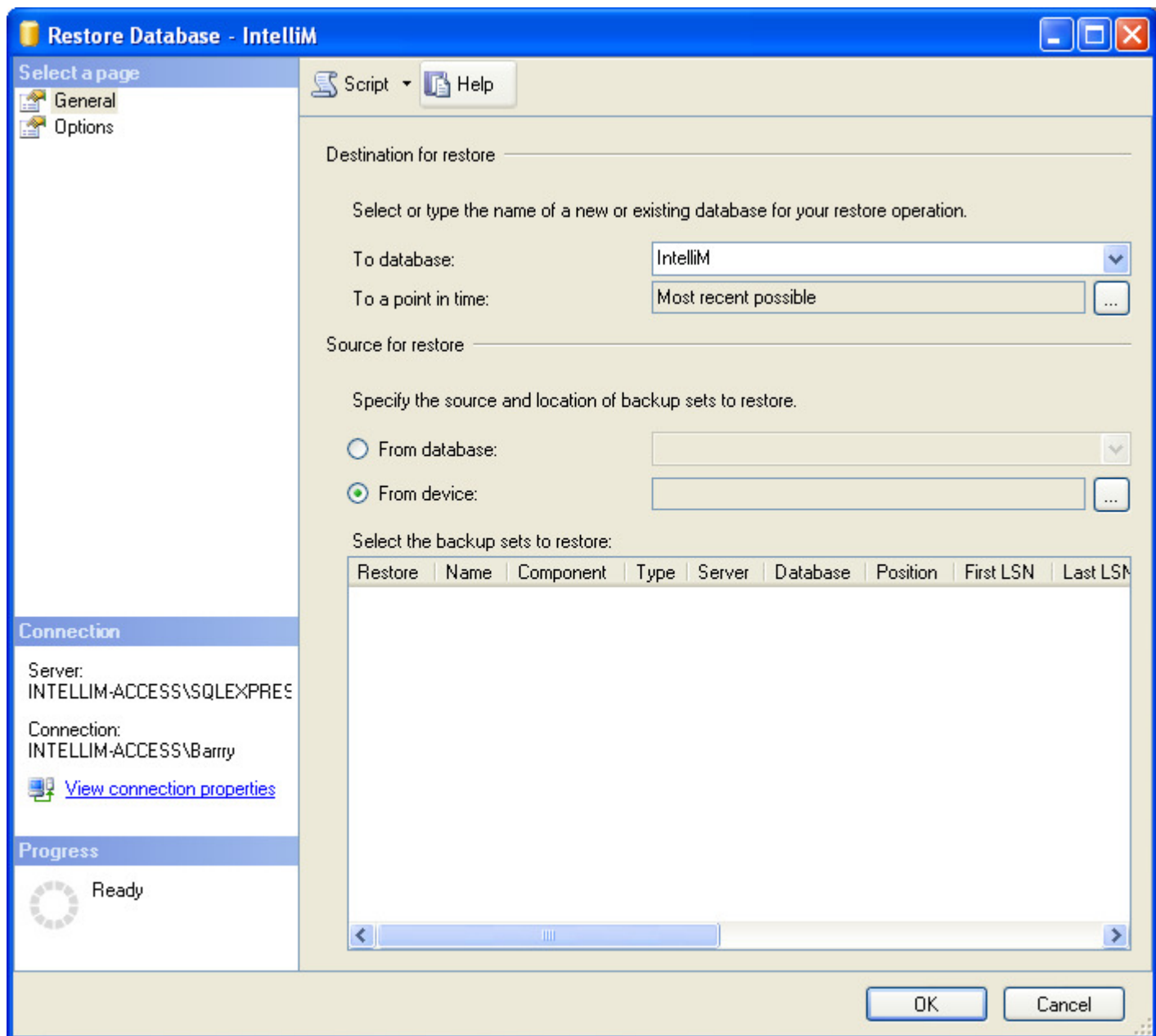
1. Copy your Supervisor Plus .bak file to the root of the C drive. Open Microsoft SQL Server Mgmt Studio and Log in.



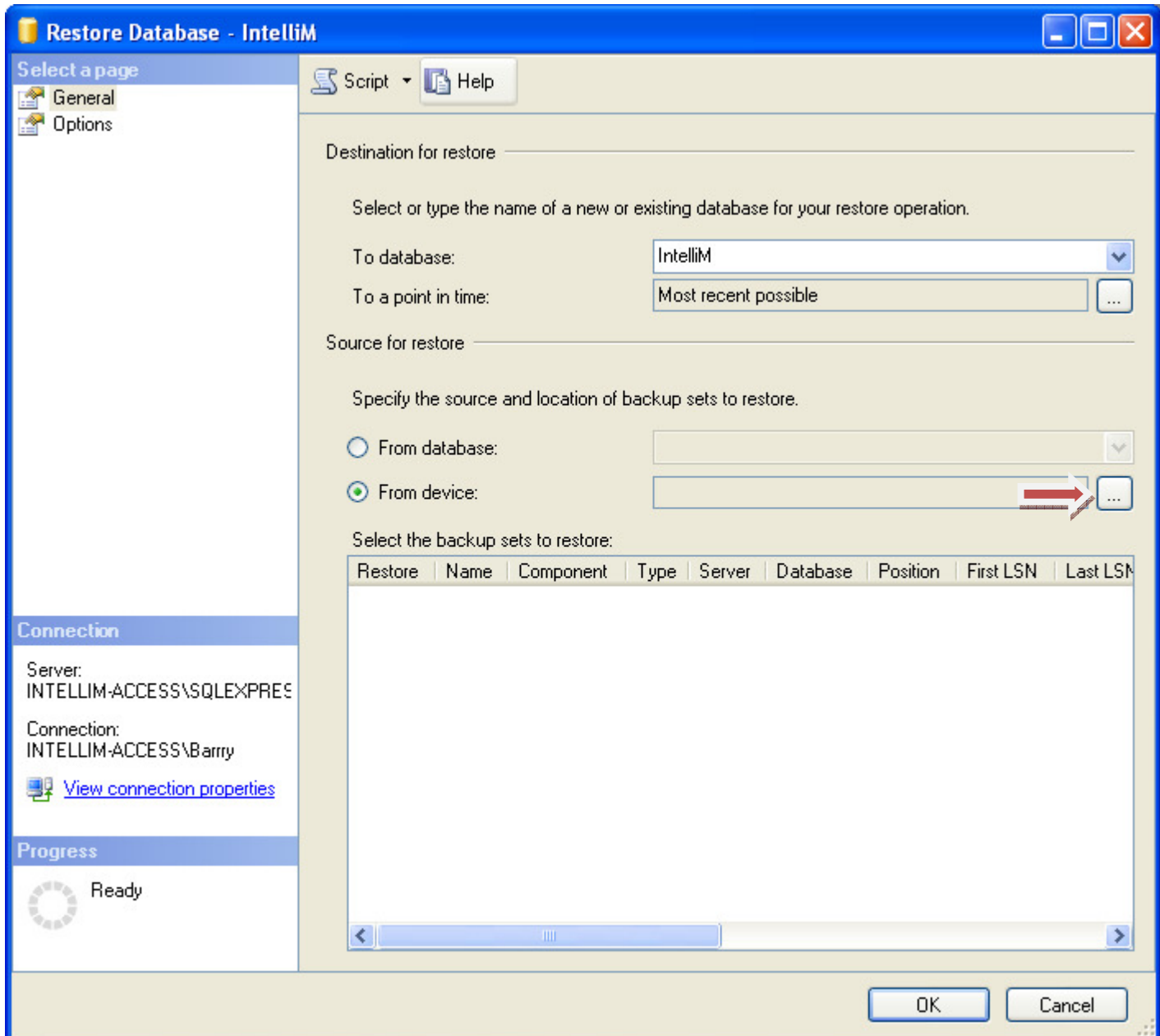
2. In the left side panel, expand out Databases and right click on Databases and click on Restore Database



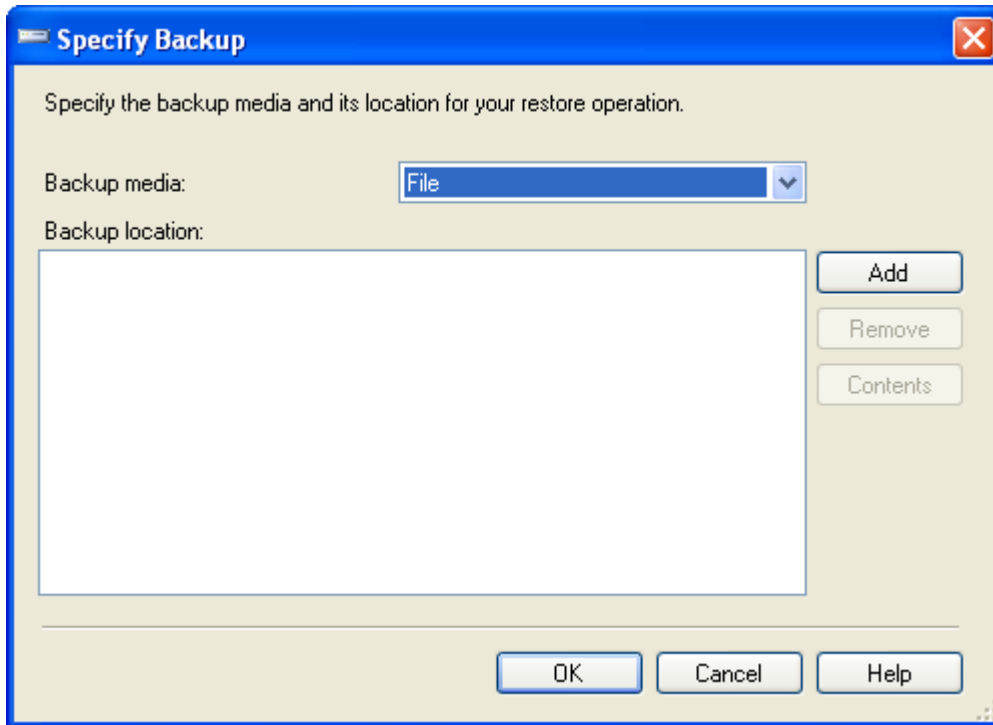
3. In the "To Database" type in new name of "IntelliM"



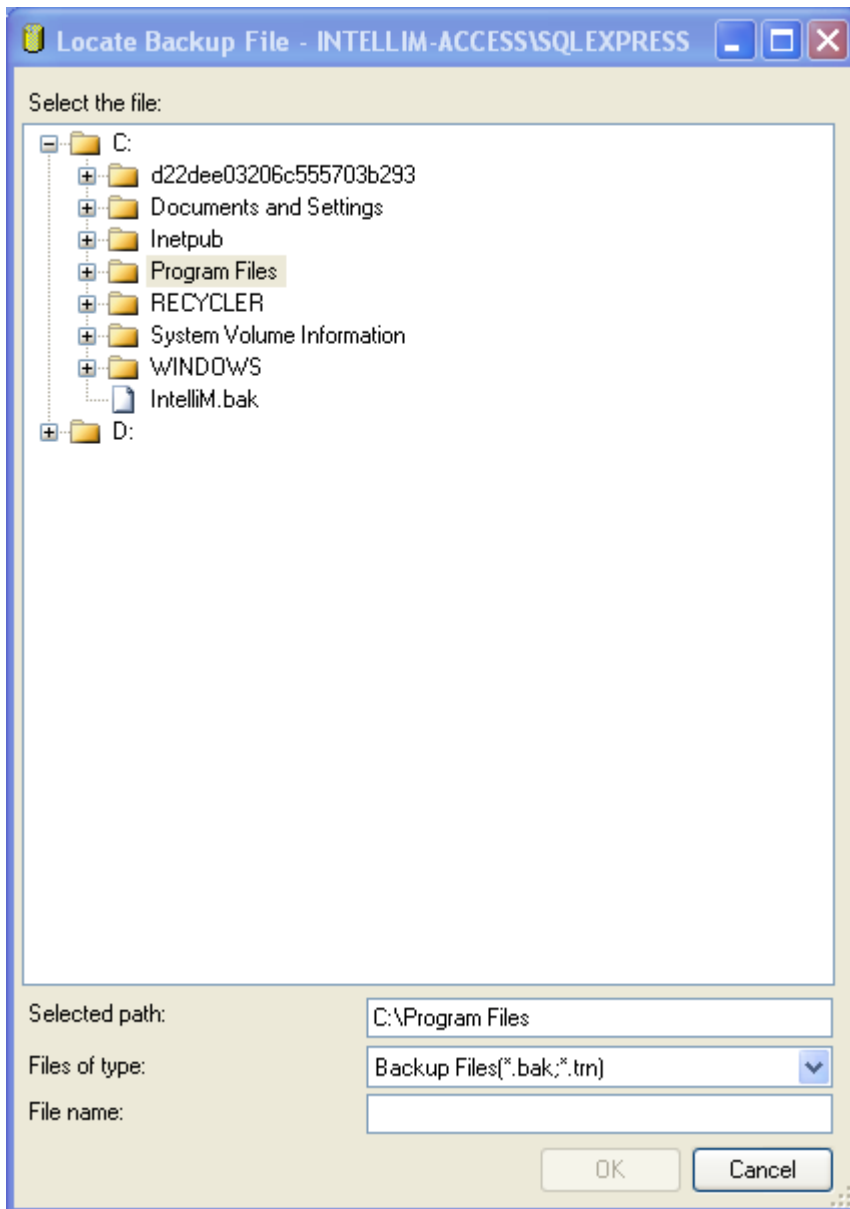
4. In the "From Device" field, click the 'browse' button



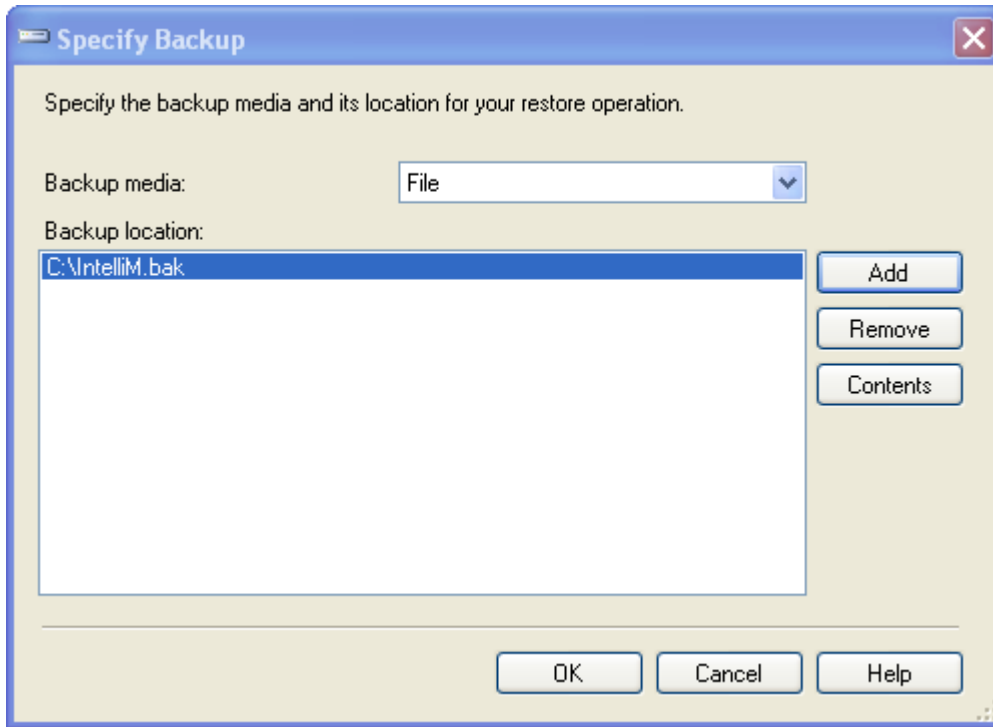
5. Search for your Supervisor Plus backup file (usually a .bak file) click Add



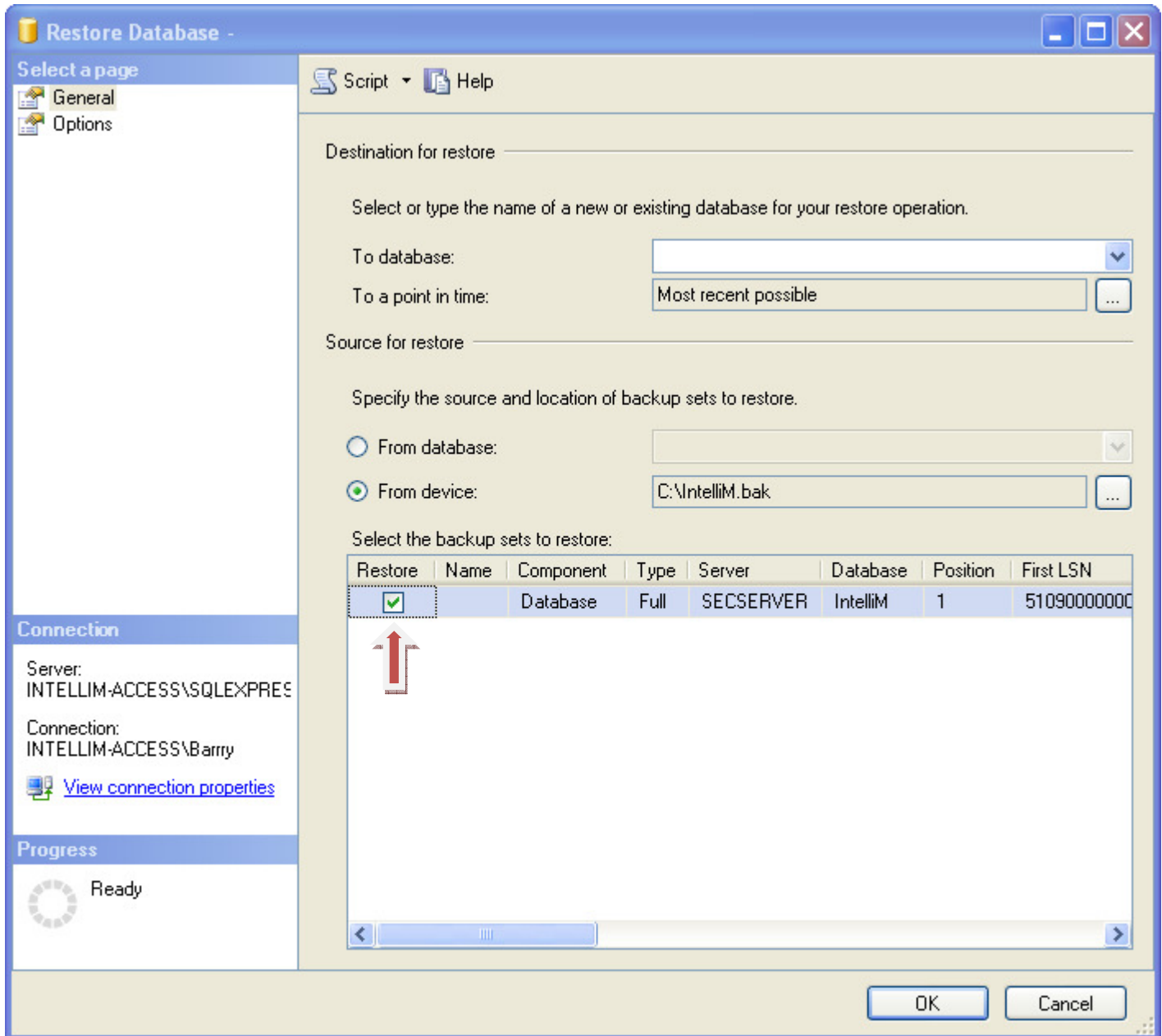
6. From Step 1, click on the backup file from the C drive (click the + symbol next to the Program Files folder and you should see your backup file plainly under the Windows folder)



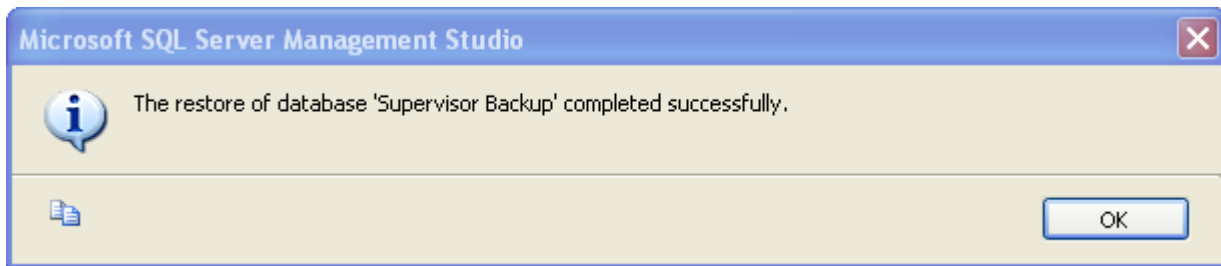
7. One the file appears in the box, click OK to continue.



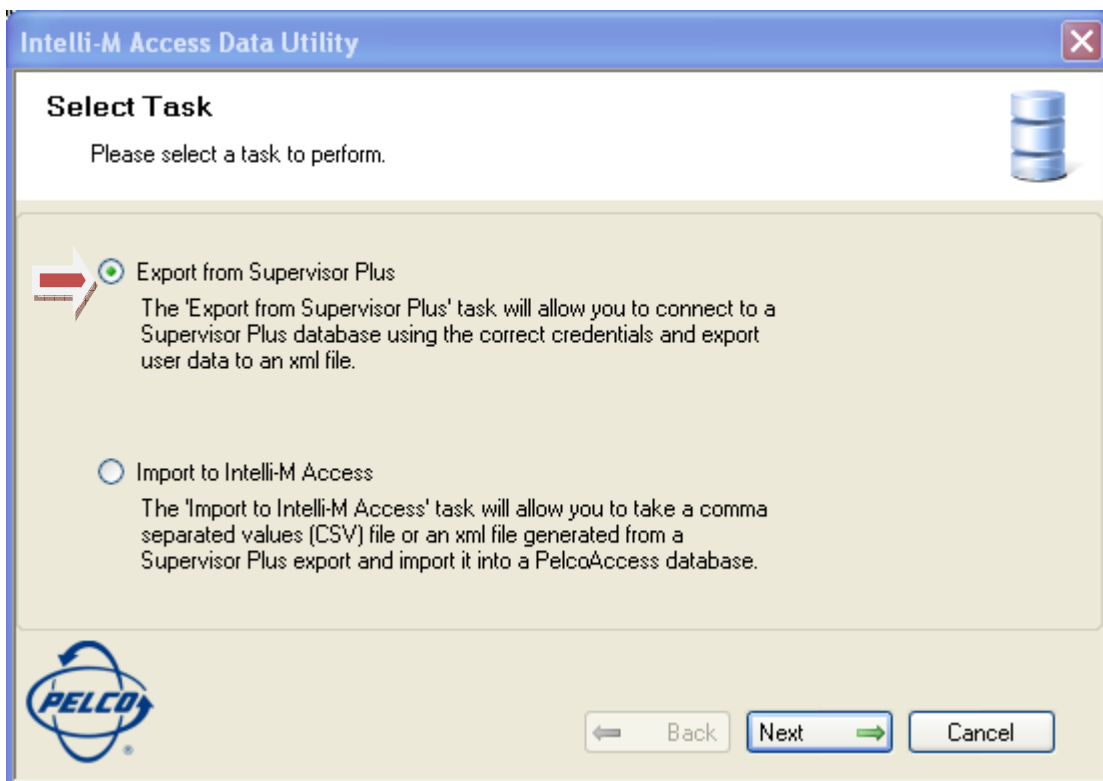
8. Put a check mark in the box under 'Restore' and click ok to start the database import.



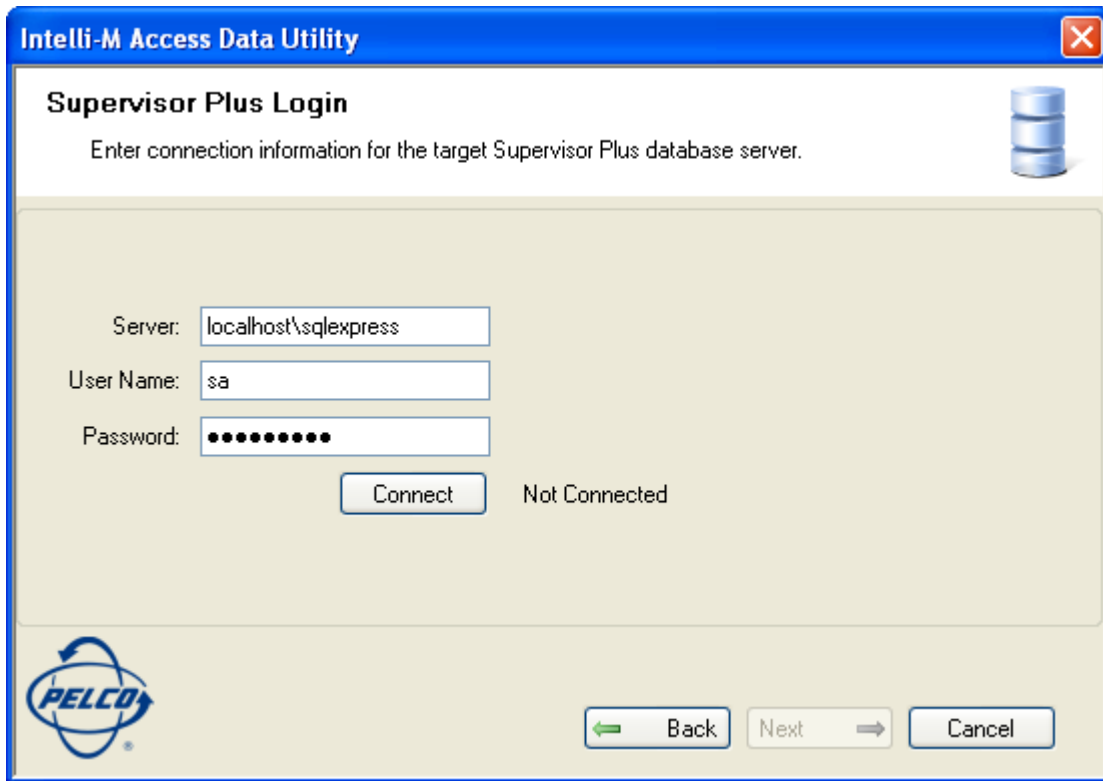
9. Once it completes successfully you should see.....



10. Click Start..... Programs..... infinias..... Export From Supervisor Plus. Click Next



11. If you are on the IntelliM Access server type localhost\sqlexpress in the Server box followed by the 'sa' user name and the password that you created during the install process and click Connect.



The image shows a Windows-style dialog box titled "Intelli-M Access Data Utility" with a blue header bar. Below the header, the title "Supervisor Plus Login" is displayed in bold. A small database cylinder icon is in the top right corner. The main area contains the instruction "Enter connection information for the target Supervisor Plus database server." followed by three input fields: "Server:" with the text "localhost\sqlexpress", "User Name:" with the text "sa", and "Password:" with ten black dots. Below these fields is a "Connect" button and the text "Not Connected". At the bottom left is the PELCO logo, and at the bottom right are three buttons: "Back" with a left arrow, "Next" with a right arrow, and "Cancel".

Intelli-M Access Data Utility

Supervisor Plus Login

Enter connection information for the target Supervisor Plus database server.

Server: localhost\sqlexpress

User Name: sa

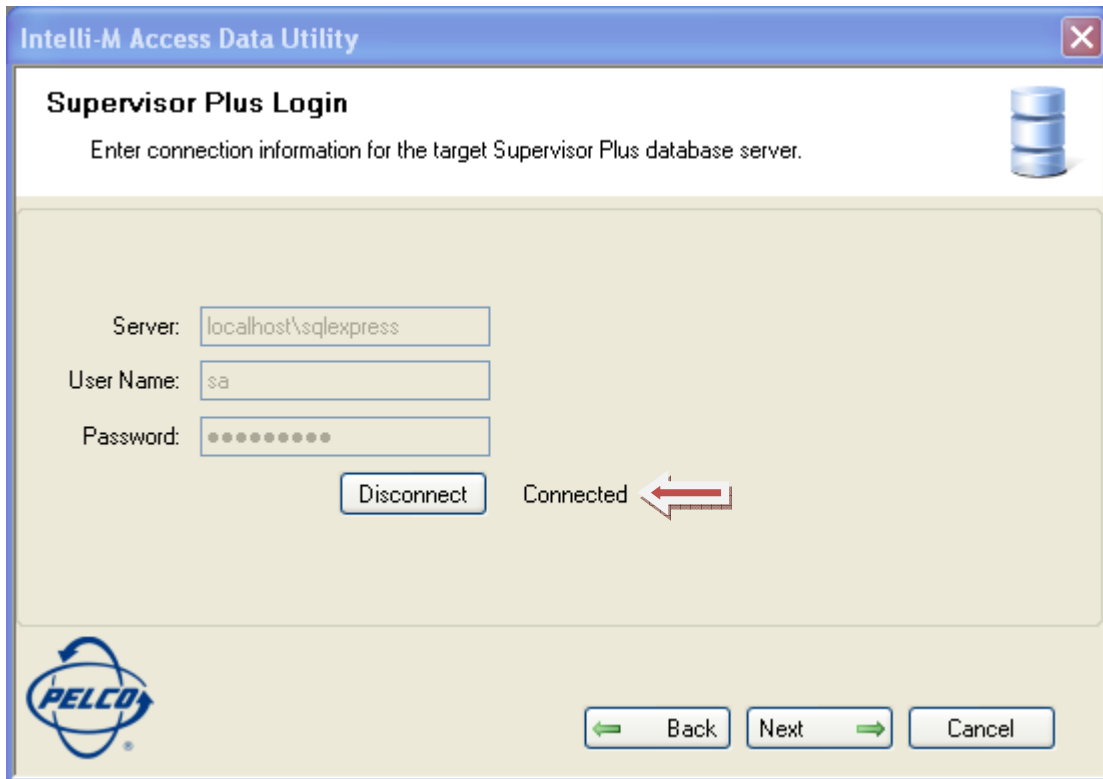
Password: ●●●●●●●●●●

Connect Not Connected

PELCO

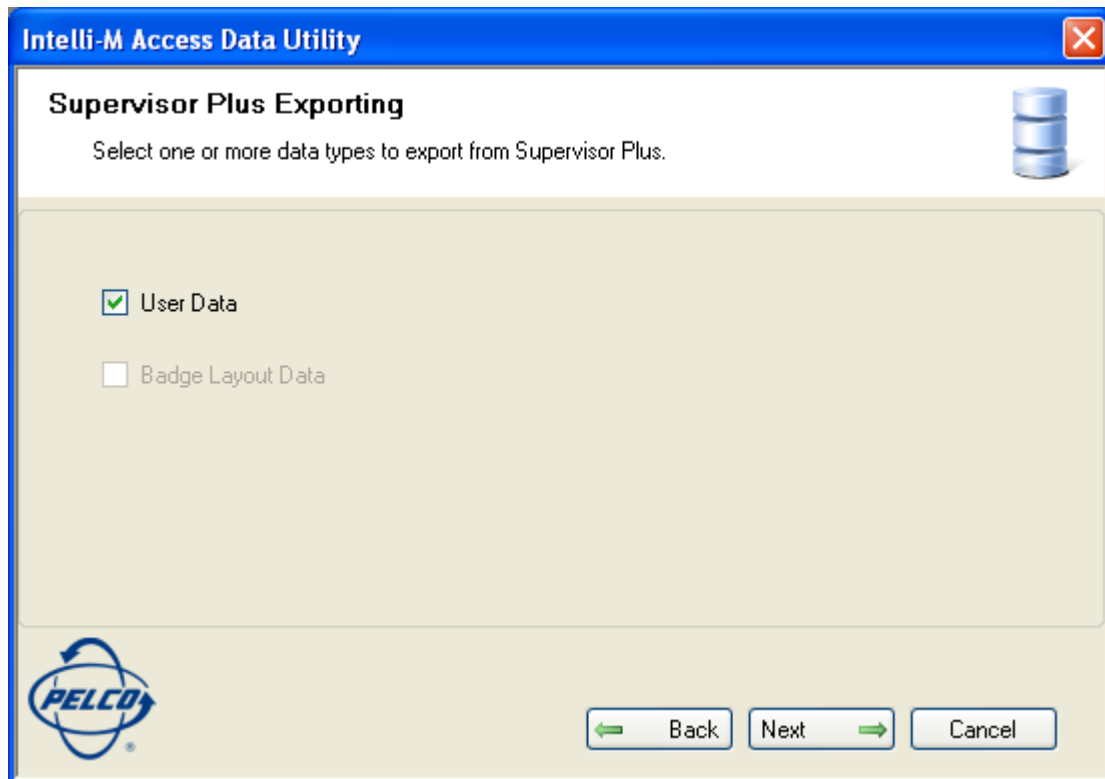
Back Next Cancel

12. If the fields were entered with the correct information, you will see that you are Connected

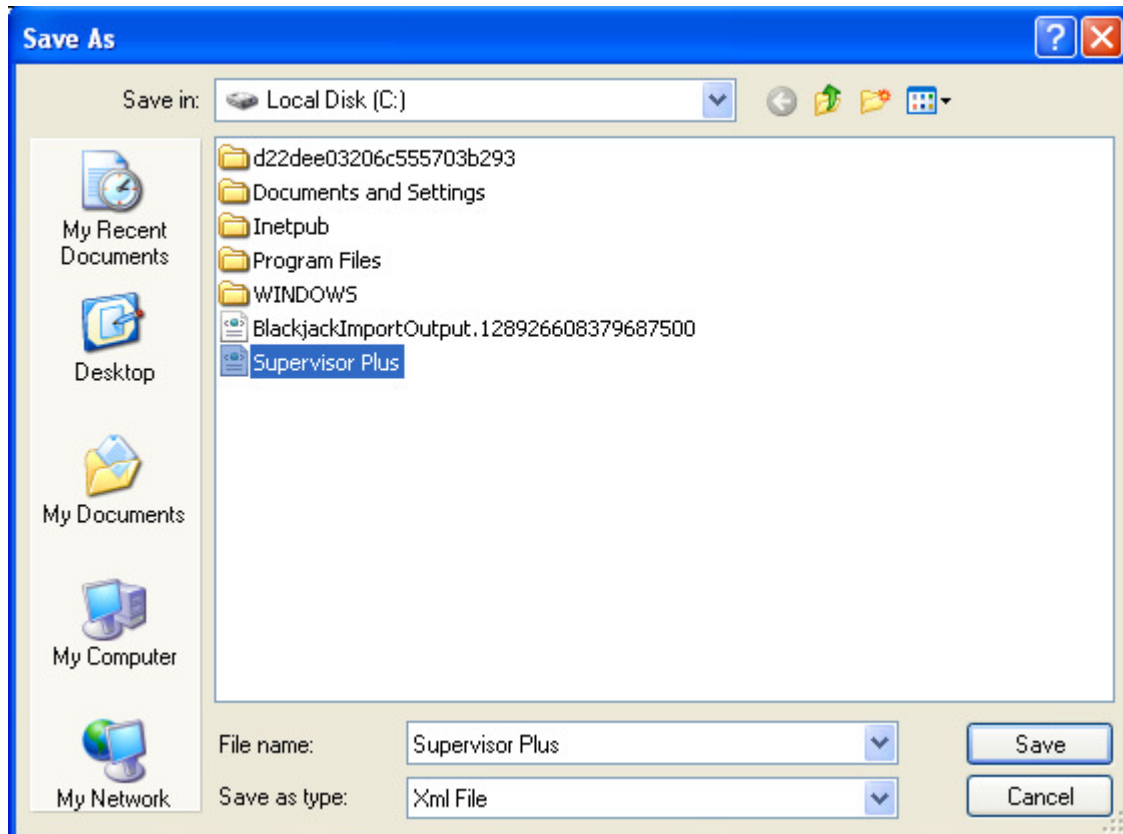


13. Click Next.....

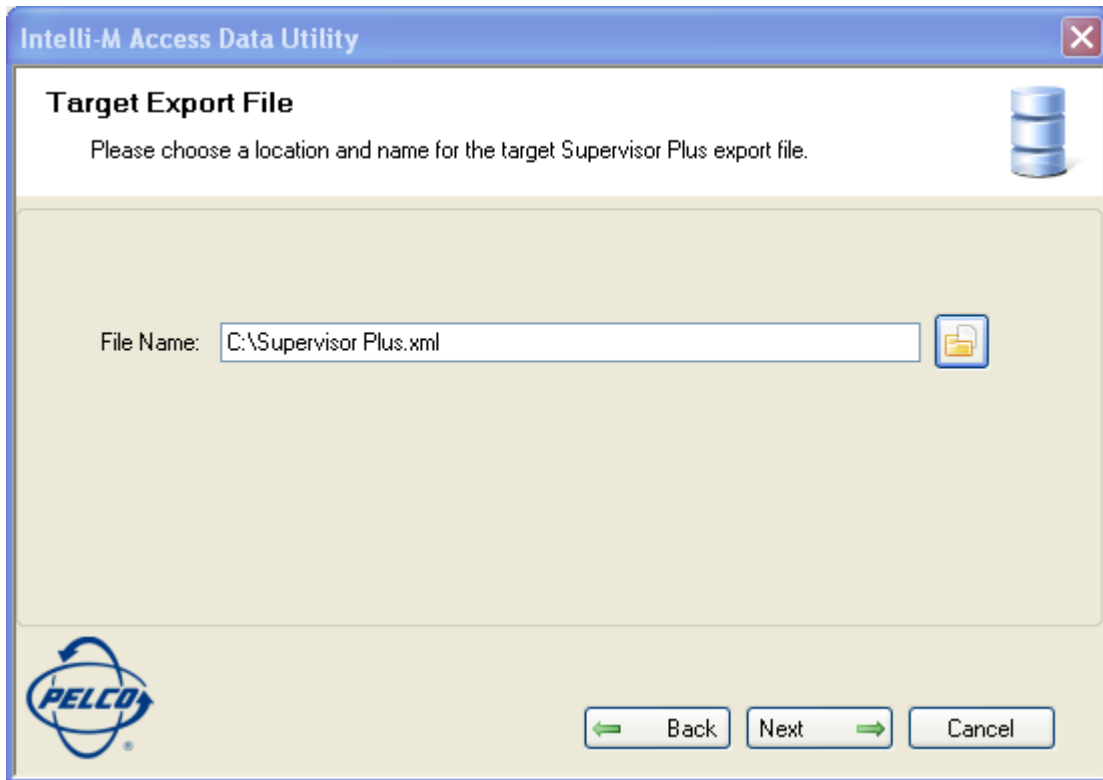
14. Click the box User Data



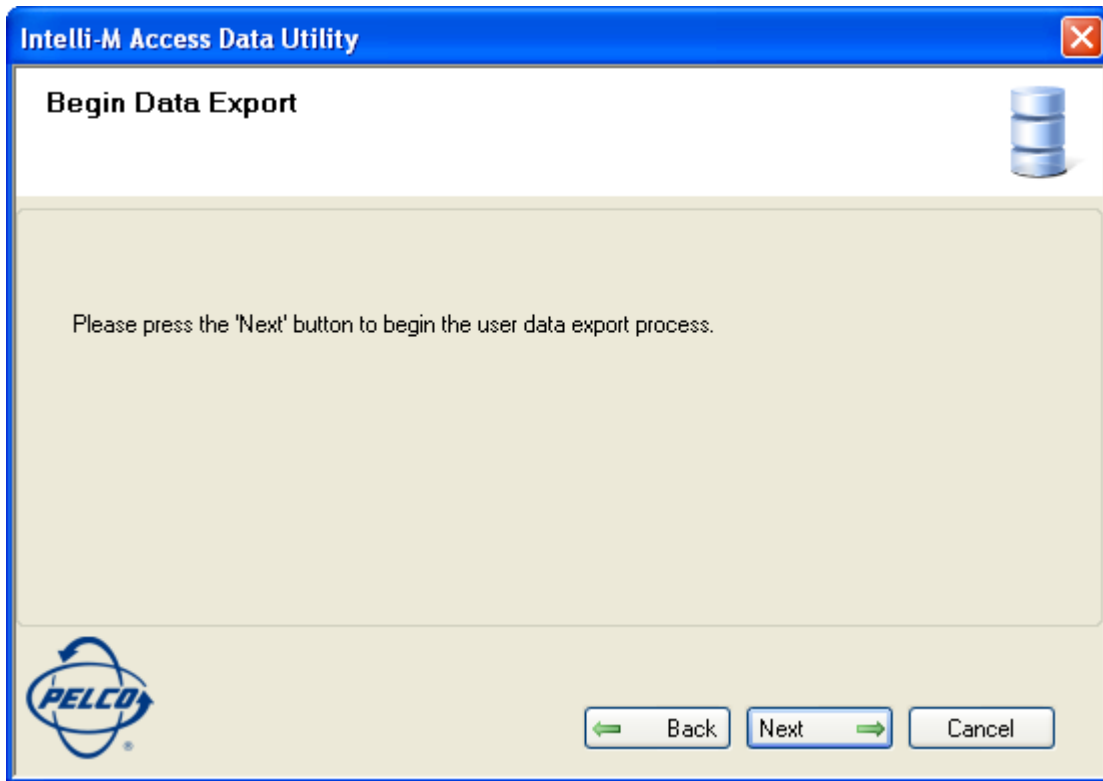
15. Save it to root of the C drive and save it as any name you want..... here we saved it as Supervisor Plus. Click Save



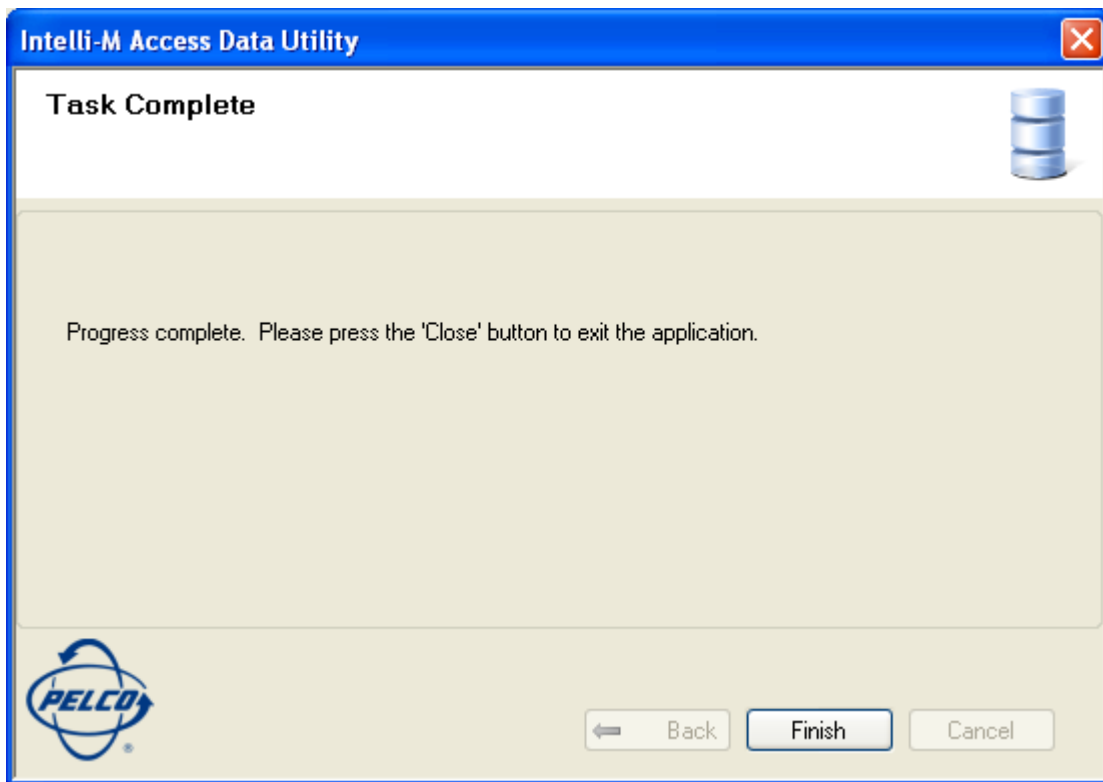
16. Click Next



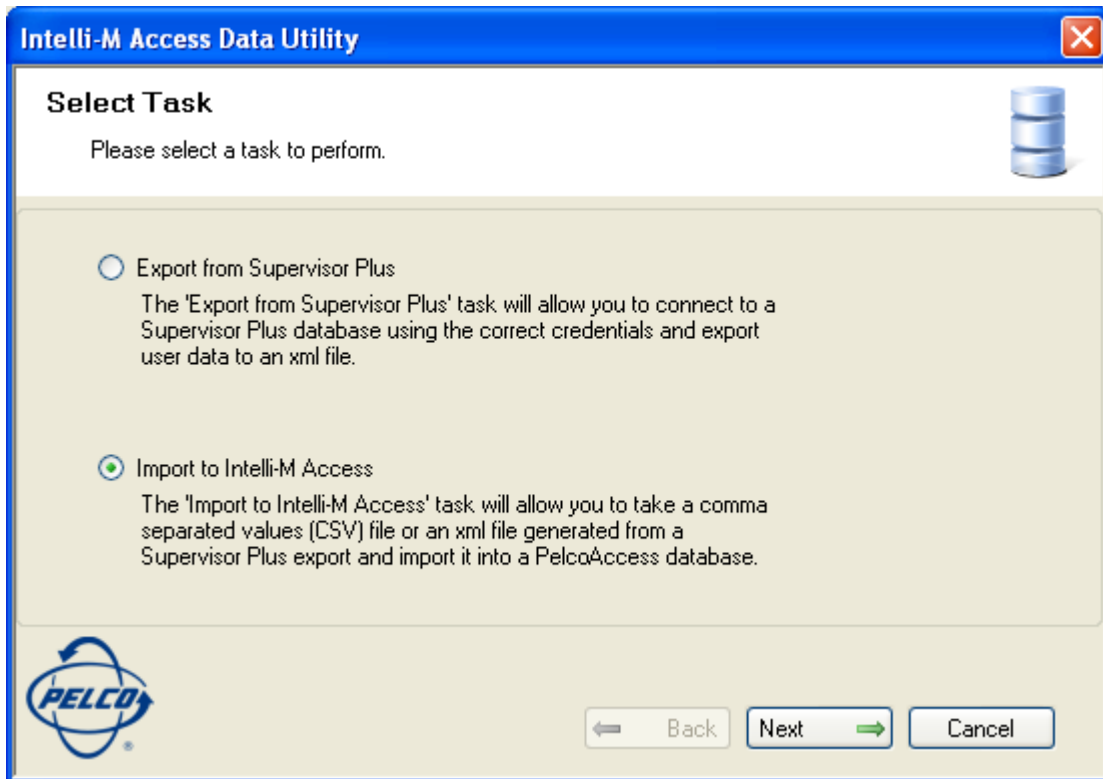
17. Click Next again.....



18. Click Finish



19. Now, its time import the newly created xml file to import your Supervisor Plus settings.
Click Start..... Programs..... infinias..... Import To IntelliM Access and click Next



20. Enter the default login ID and Password (normally admin/admin) and press connect, with a successful ID/Password it will switch to Connected. Click Next


Intelli-M Access Data Utility


Intelli-M Access Operator Login

Please provide adequate credentials to perform the data import.

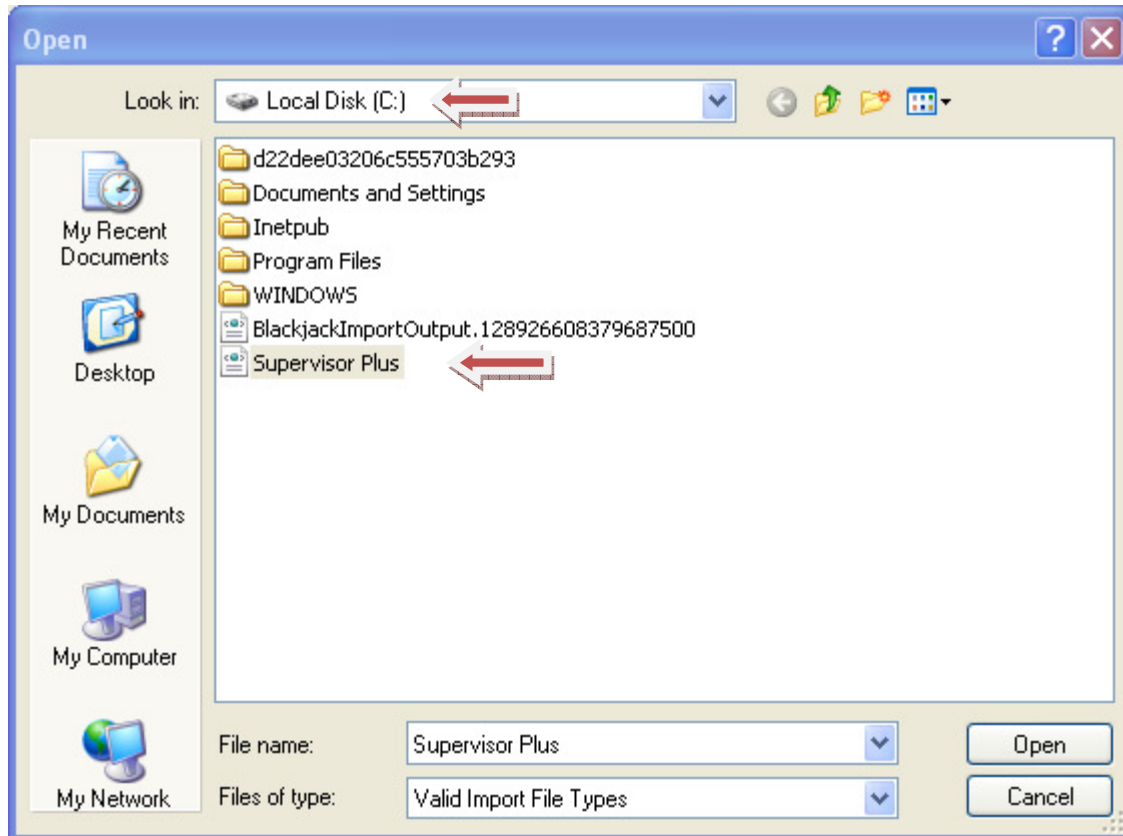
Username:

Password:

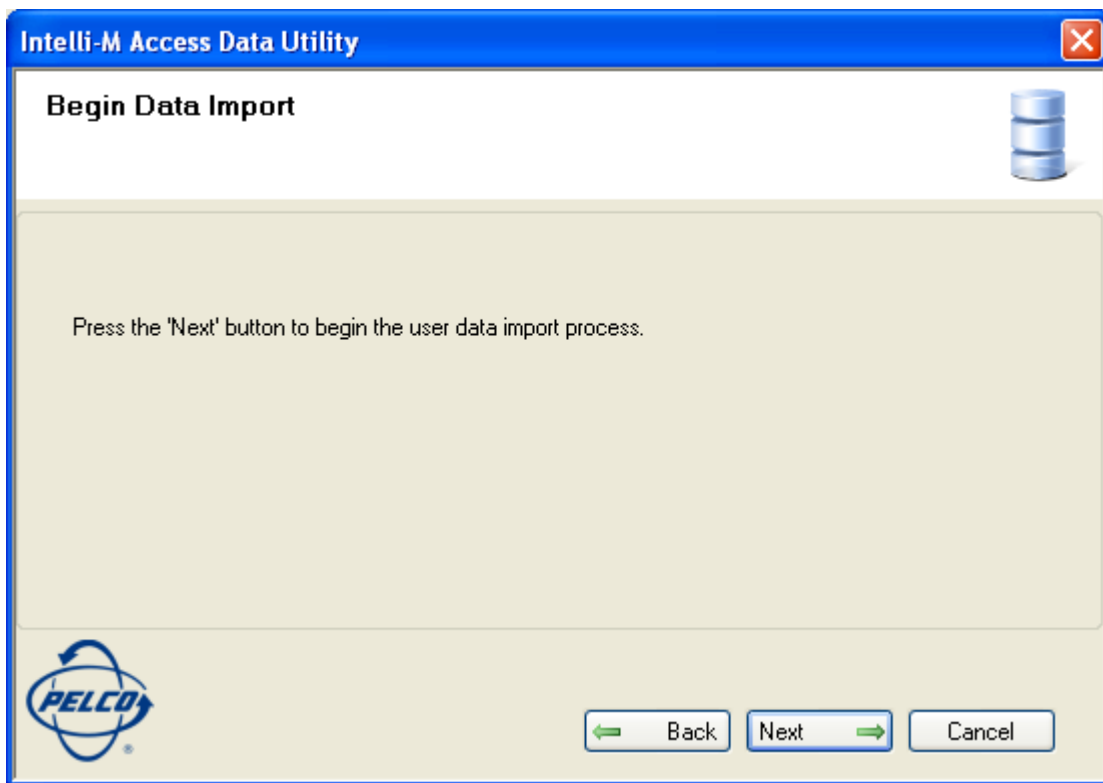
Connected 



21. Browse to the C drive where saved 'Supervisor Plus.xml' back at step 15 and **double click** the file name and then click next



22. Click Next to begin the process.



23. Once completed you will see a dialogue box stating that it completed successfully and all the cardholder names from Supervisor Plus. Click Ok to close the dialogue box and click Finish.

24. DONE!!!