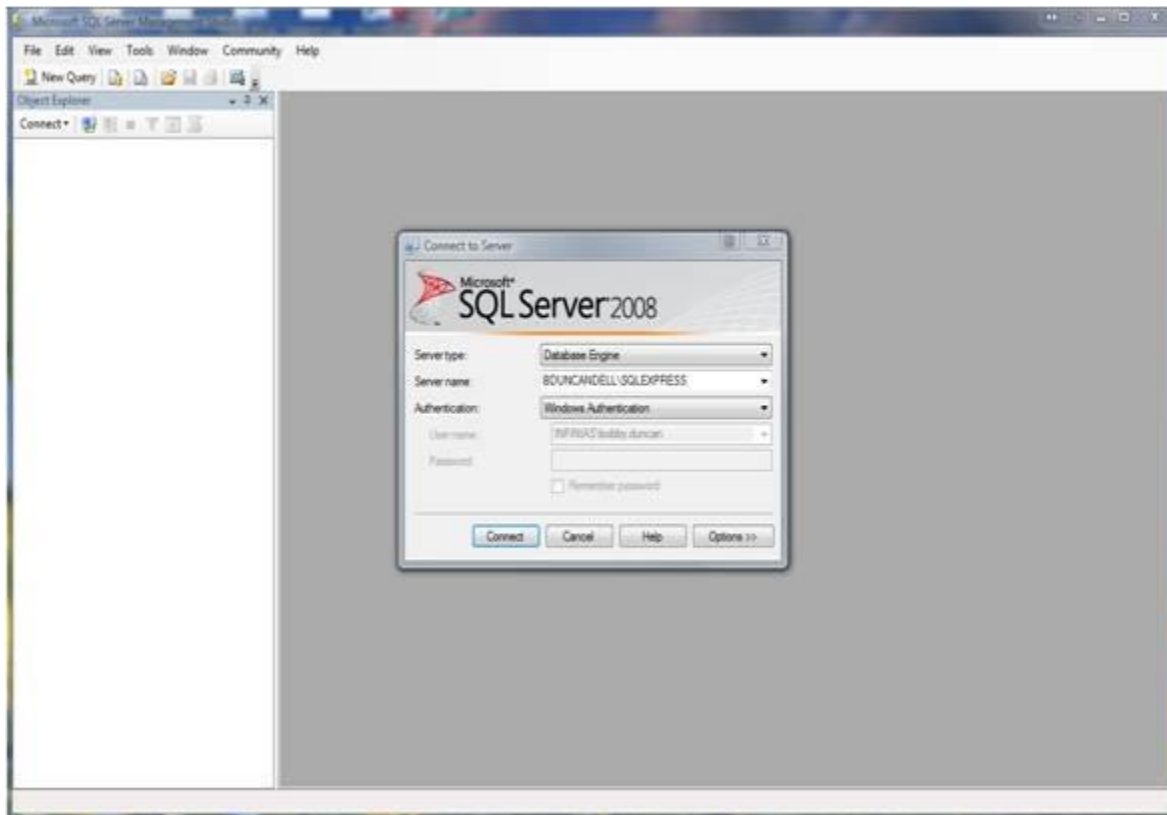


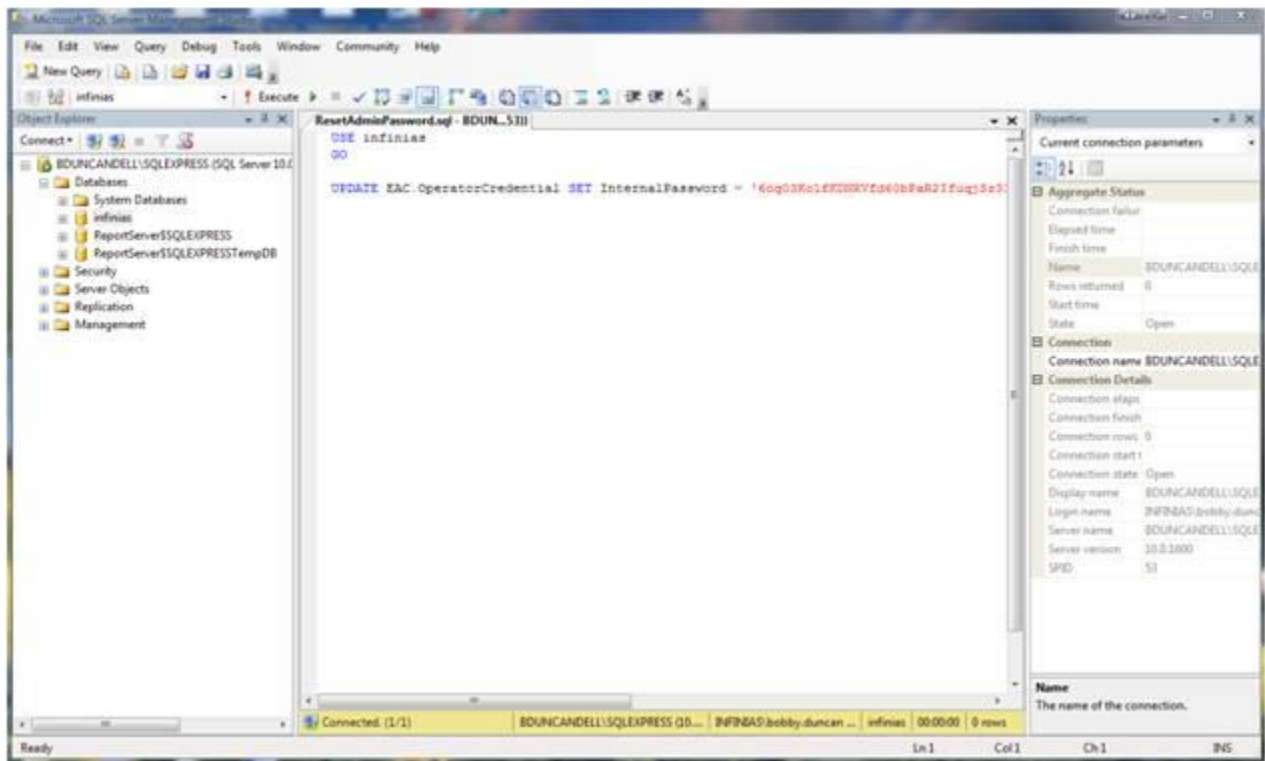
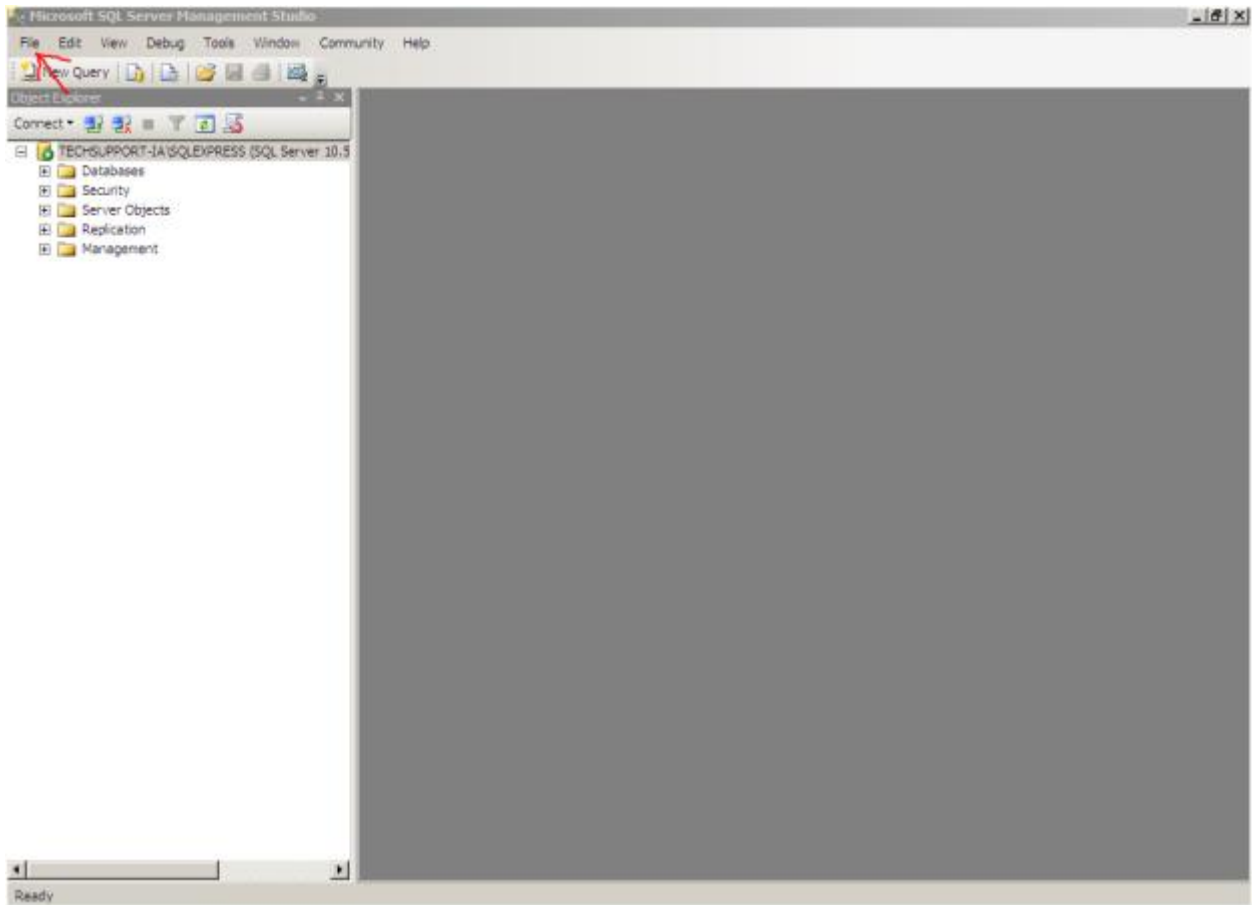
How to run a SQL Script in SQL Management Studio

Rule Actions and Door Templates can be added to Intelli-MAccess customizing the system to meet your needs. In both cases, infinias will provide a SQL Script that you will need to apply to add the desired functionality. These instructions will guide you through running a script successfully.

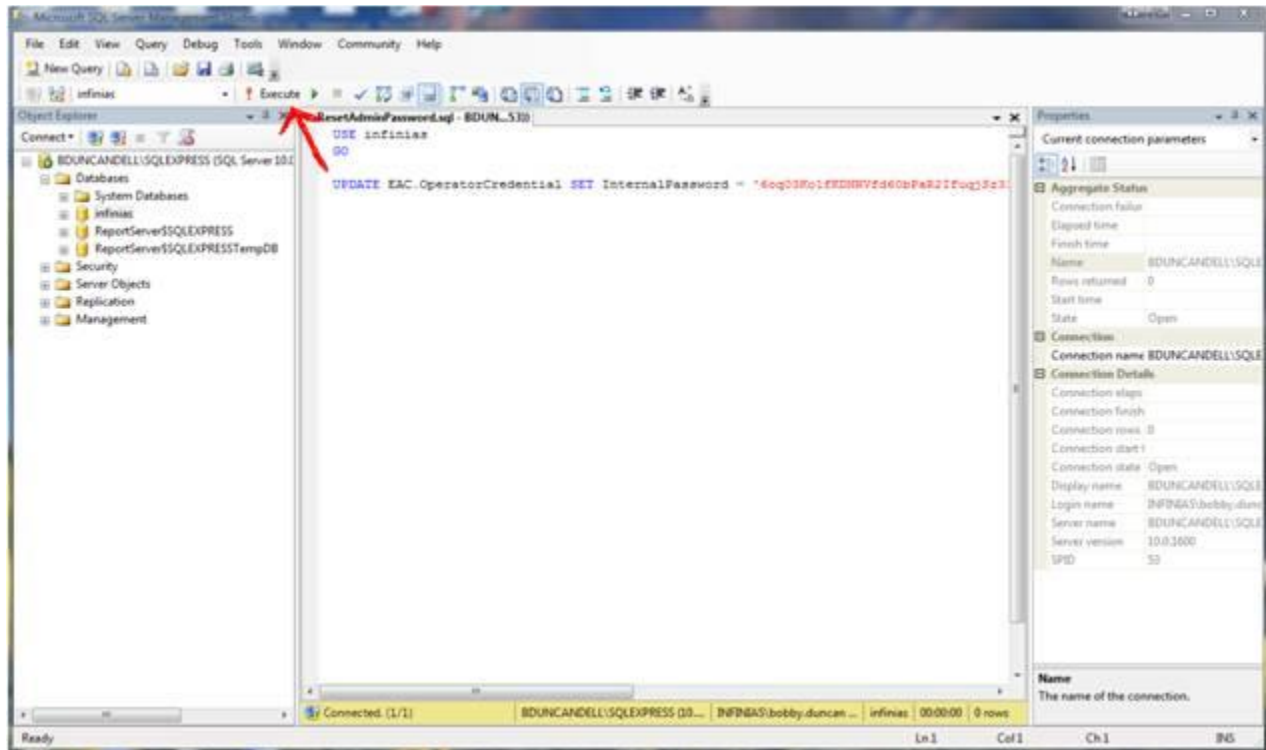
- 1: Go to start programs open SQL Server Management Studio.
- 2: Click on Connect.



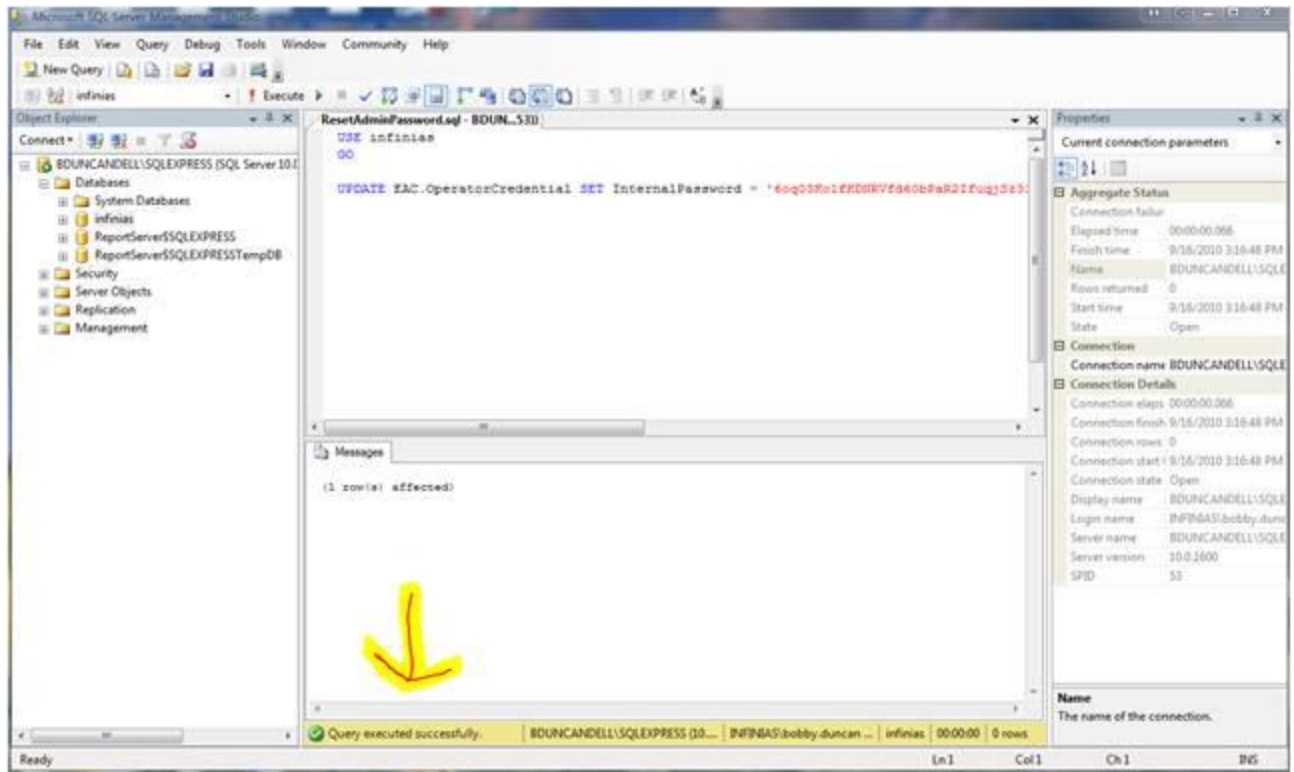
- 3: On the left click on Databases and click on the infinias database.



6: Now click the Execute button at the top.



7: After clicking the Execute the window will look like this and say (Query executed successfully)



That's it you are done. You can close SQL Management studio.