

Quick Guide 150002

VIGIL 8 – Available VIGIL Server Client Connection Methods

Tech Tip #:	150002-2
Date:	September 17, 2015
Product Affected:	VIGIL Server 8, VIGIL Client 8, 3xLOGIC View Lite 8, 3xCLOUD 8, VIGIL Web 8
Purpose:	This document is intended to supply the reader with a brief overview of available VIGIL Server client connections.

1	INTRODUCTION	1
2	DESKTOP CLIENT – VIGIL™ CLIENT	1
3	BROWSER-BASED CLIENTS – VIGIL™ WEB AND 3XCLOUD	2
4	MOBILE/SMARTPHONE APPLICATION CLIENTS – 3XLOGIC'S VIEW LITE II	3
5	CONTACT INFORMATION	3

1 Introduction

Several different client connection methods exist for VIGIL Server 8. This guide showcases the several available client connection methods and offers information and brief description regarding each.

2 Desktop Client – VIGIL™ Client

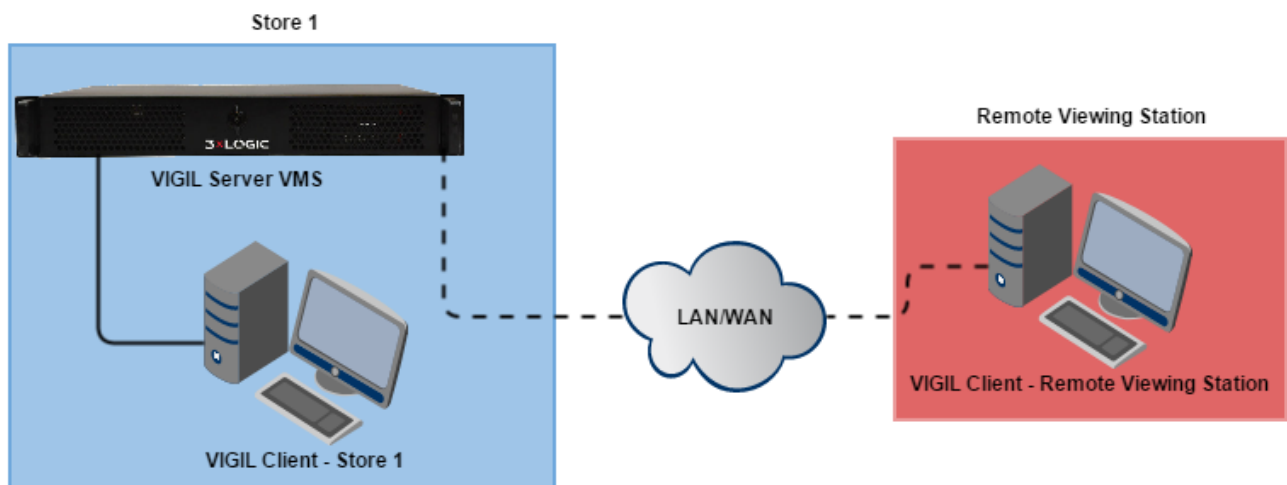


Figure 1-1 VIGIL Client Basic Topology

3xLOGIC's cornerstone remote connection solution, VIGIL Client, can connect to a Server on a local secure network or via the Internet. VIGIL Client gives you unrivalled access to live and recorded video from any of your networked VIGIL Server's. Advanced playback and intelligent SmartSearch functionality lets you identify and review events of interest quickly and easily. The result is more accurate and efficient investigation of incidents with easy export of evidence material.

A unique combination of control, efficiency, and adaptability offering investigators unparalleled accessibility and manageability to their video network. The result is faster response times, reduced investigator times, and increased access and effectiveness of your video surveillance investments. VIGIL Client is free to use, and can be downloaded from www.3xlogic.com. Contact your 3xLOGIC representative for more information.

3 Browser-Based Clients – VIGIL™ Web and 3xCLOUD

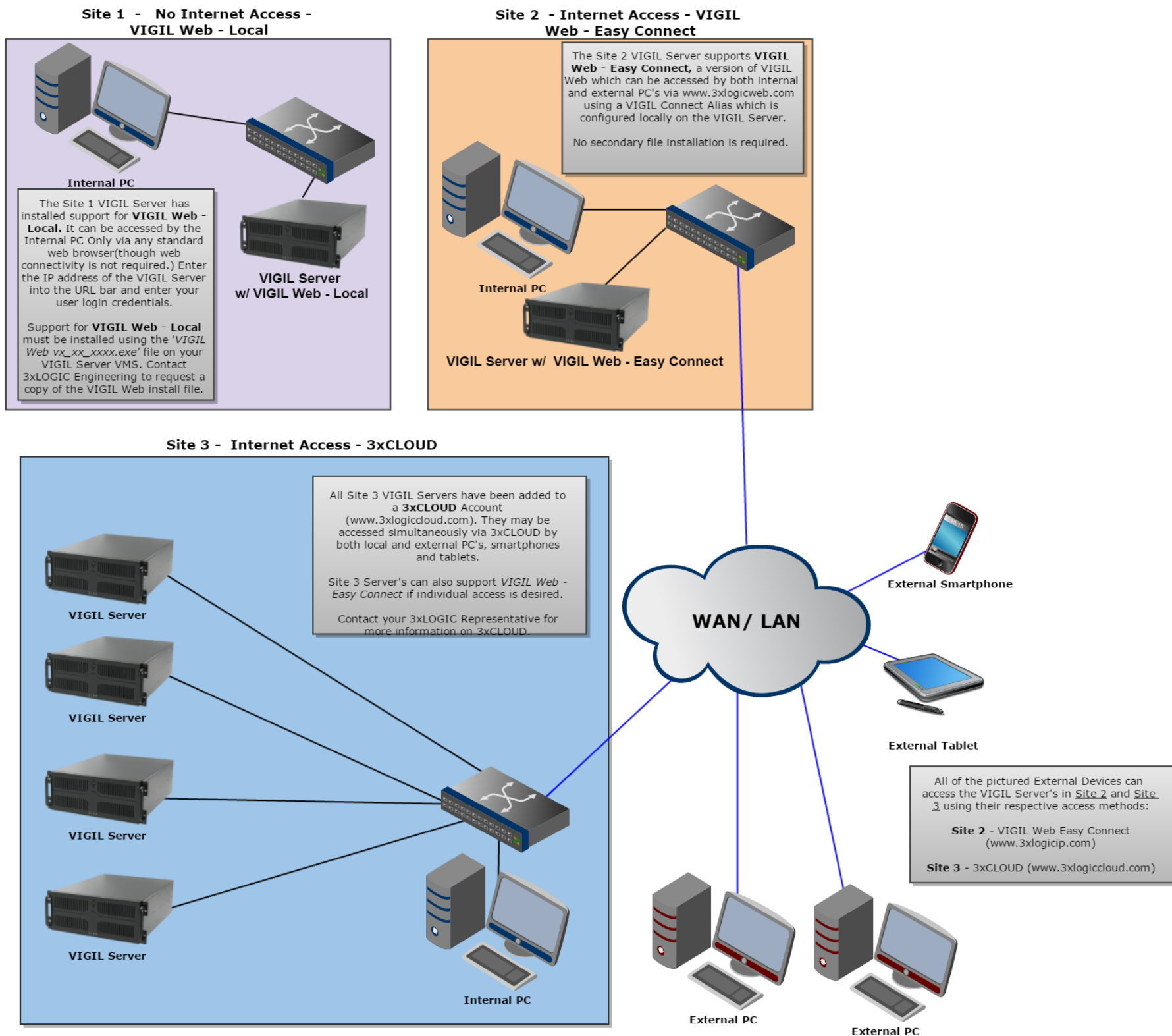


Figure 1-2 Browser-Based Clients Basic Topology

To meet the growing needs of an ever-evolving client-base, 3xLOGIC offers multiple browser-based Client solutions. Each client offers different access requirements and each can be utilized to meet the needs of a variety of network environments:

- **VIGIL Web – Local** : VIGIL Web is a browser-based interface for a VIGIL Server VMS system. The *Local* version of VIGIL Web is intended for networks with no external internet connection and thus can only be accessed via a PC on the same internal network as the VIGIL Server in question. Open a standard web browser (no web connectivity required) on an internal PC and enter the *IP address*(i.e 10.1.11.277) of the VIGIL Server. Enter the Server's login credentials to gain access to live and playback footage, POS/ATM data and more from the Server's networked cameras and devices.
- **VIGIL Web – Easy Connect** : VIGIL Web is a browser-based interface for a VIGIL Server VMS system. The *Easy Connect* Version of VIGIL Web permits a VIGIL Server to be accessed by both internal and external PCs/devices and is typically used for individual access to a VIGIL Server hosted on a network with an internet connection. To access a Server using *VIGIL Web- Easy Connect*, VIGIL Connect must be enabled and configured on the Server. On any PC or Smart Device, open a standard web browser and navigate to <https://www.3xlogicweb.com/>. To login, you will require the VIGIL Connect alias or serial number and VIGIL Server login credentials.
- **3xCLOUD** – 3xCLOUD is a platform-independent, user-configurable web portal. With 3xCLOUD, you can use any network-enabled device (smart phone, tablet, laptop or desktop computer.) Sign-up for a 3xCLOUD account at <https://www.3xlogiccloud.com>, add VIGIL Servers to your account and begin viewing live video, searching playback, viewing POS/ATM data and more from any web-capable device, anytime, anywhere.

4 Mobile/Smartphone Application Clients – 3xLOGIC's View Lite II



Figure 1-3 3xLOGIC View Lite Smartphone App Connection Topology

With the exponential growth of wireless and mobile capability, the potential for instant and direct access to your security network via a mobile device has become reality. Welcome to 3xLOGIC's View Lite II Smart Device application, a new solution to your mobile video surveillance and management needs.

With 3xLOGIC's View Lite II you can use your Apple iOS or Android OS device to view live streams of all cameras connected to your VIGIL Server(s). View Lite II is designed to connect and view both IP and analog cameras from a configured VIGIL Server. With a simple drag-and-drop interface, saved views and several different layout options, you can easily view up to 32 live cameras on your mobile device.

To compliment this core functionality, features such as VIGIL Connect, still image exports, full PTZ control (on applicable cameras), relays(DIOs), alarm push notifications, POS Search and full playback capability gives View Lite II a powerful feature set that far exceeds standard mobile video management offerings.

Download 3xLOGIC View Lite directly to your device on the [iTunes App Store](#) for iOS devices or from the [Google Play Store](#) for Android users.

5 Contact Information

If you require more information, or if you have any questions or concerns, please contact 3xLOGIC Support:

Email: helpdesk@3xlogic.com

Online: www.3xlogic.com