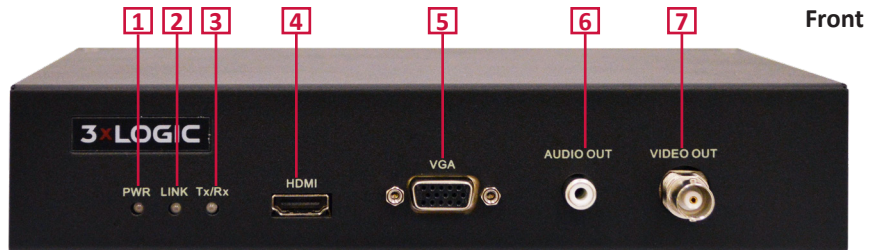
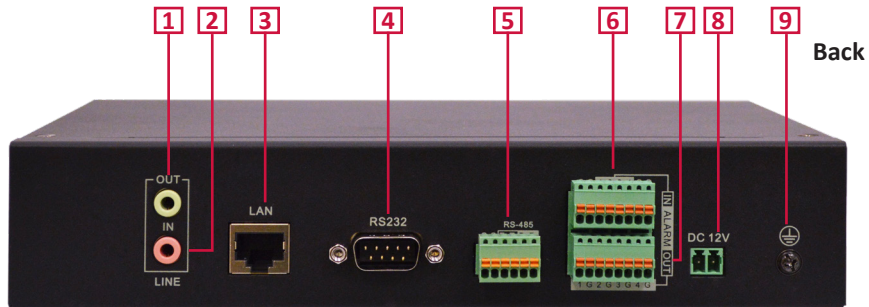


Panel Connection Diagram | VH-DECODER-1



1	Power Indicator	5	VGA Output
2	Network Connection Indicator	6	Audio Output
3	Data Transmission Indicator	7	BNC Video Output
4	HDMI Output		

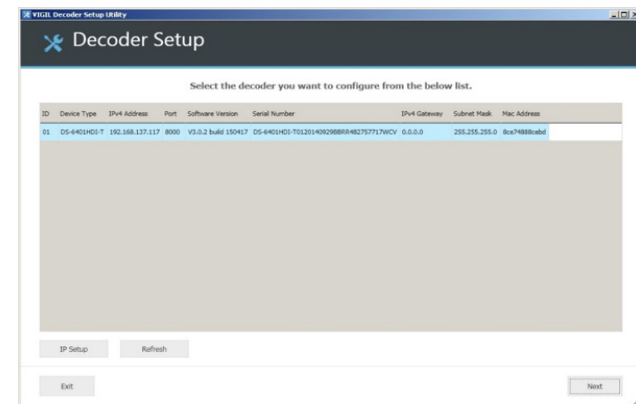


1	Audio Line Out	6	Alarm In
2	Audio Line In	7	Alarm Out
3	Ethernet Connection	8	Power Supply
4	RS-232 Serial Interface	9	Grounding
5	RS-485 Serial Interface		

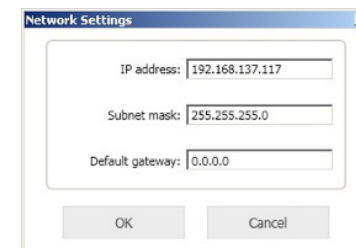
Quick Start Guide

Getting Started | VH-DECODER-1

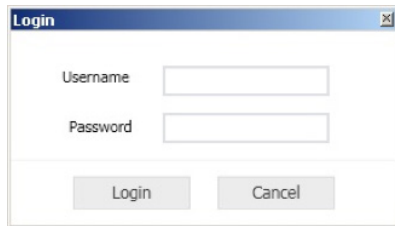
1. Open the VIGIL Decoder Setup Utility
 - a. Must be installed first — can be found on our website or through 3xLOGIC Sales Representative
 - b. VIGIL Server Settings > Decoder tab
 - c. Start Menu > All Programs > VIGIL > Utilities
2. The Setup Utility will automatically find all 3xLOGIC decoders on the same network that the Server is on.



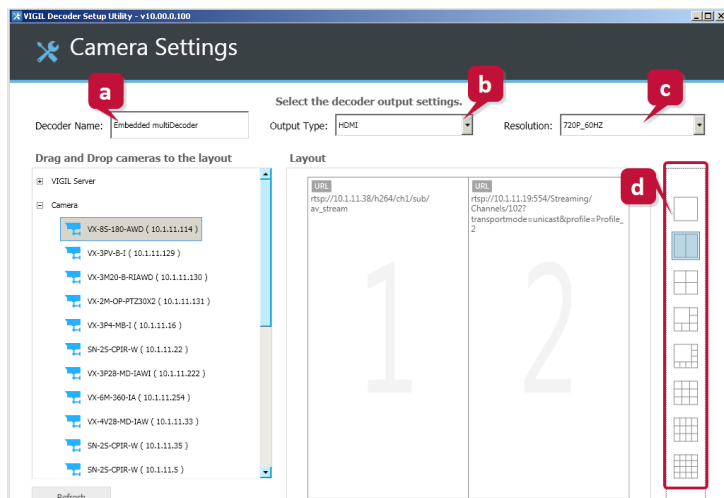
- a. To change the IP of the decoder, click the **"IP Setup"** button and enter the desired network information in the screen.



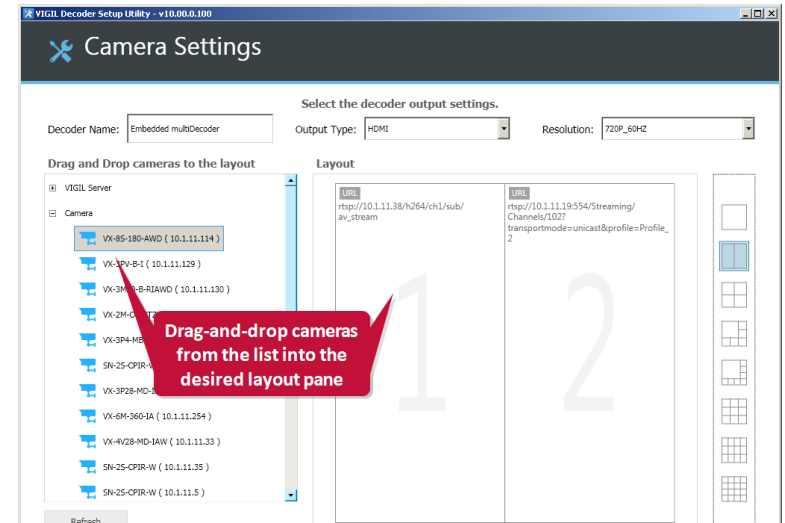
3. To continue setup, enter the default username and password for the decoder.
 - a. Username: **admin**
 - b. Password: **12345**



4. The main camera settings page will deploy. To begin:
 - a. Name your decoder. The default name must be changed.
 - b. Select an output type. Only one output can be active.
 - c. Select the resolution of the monitor.
 - d. Choose a camera layout from the right-side layout bar.



5. The Setup Utility will find all 3xLOGIC Servers and cameras available on your network. They will be displayed in the left-hand list. Drag and drop cameras into the panes in which you wish them to reside.
 - a. **Note:** For cameras not connected to a Server, you may be prompted to supply the camera's username and password.



6. After clicking "Finish" you will have the option to restart the Setup Utility or Exit the program.

