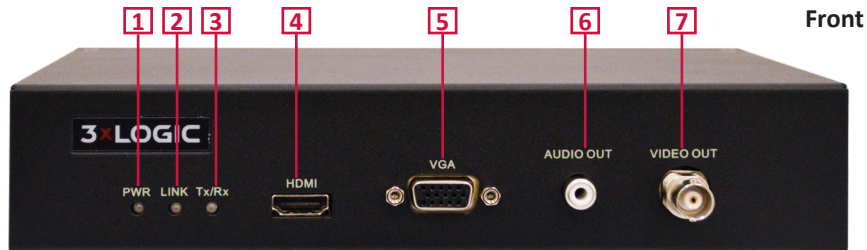
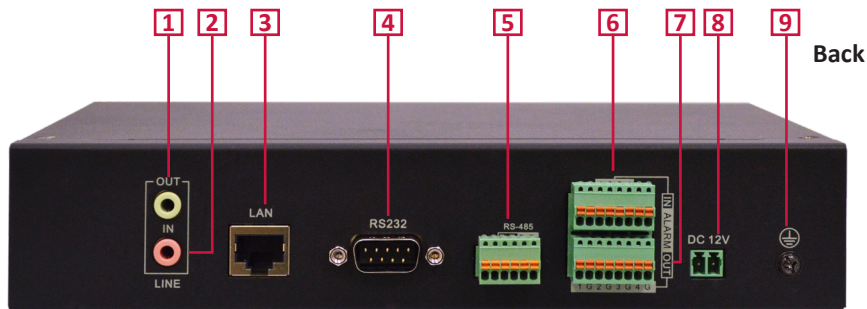


## Panel Connection Diagram | VH-DECODER-1



1	Power Indicator	5	VGA Output
2	Network Connection Indicator	6	Audio Output
3	Data Transmission Indicator	7	BNC Video Output
4	HDMI Output		

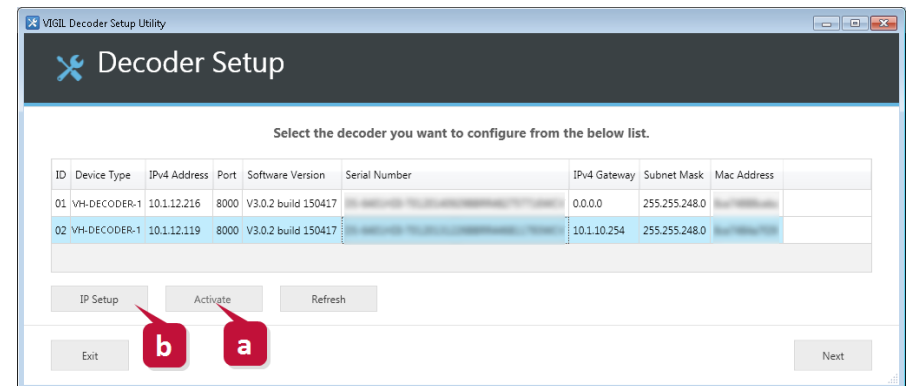


1	Audio Line Out	6	Alarm In
2	Audio Line In	7	Alarm Out
3	Ethernet Connection	8	Power Supply
4	RS-232 Serial Interface	9	Grounding
5	RS-485 Serial Interface		

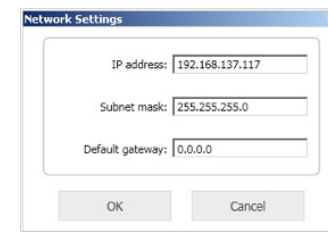
# Quick Start Guide

## Getting Started | VH-DECODER-1

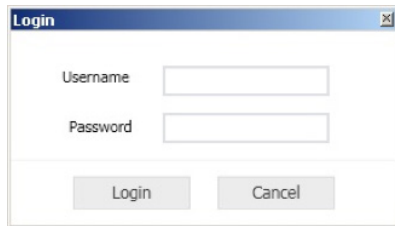
1. Open the VIGIL Decoder Setup Utility
  - a. The Decoder Utility must be installed first and can be found on 3xLOGIC website or through a 3xLOGIC Sales Representative
  - b. Located at VIGIL Server Settings > Decoder tab or Start Menu > All Programs > VIGIL > Utilities
2. The Setup Utility will automatically find all 3xLOGIC decoders on the same network that the Server is on.



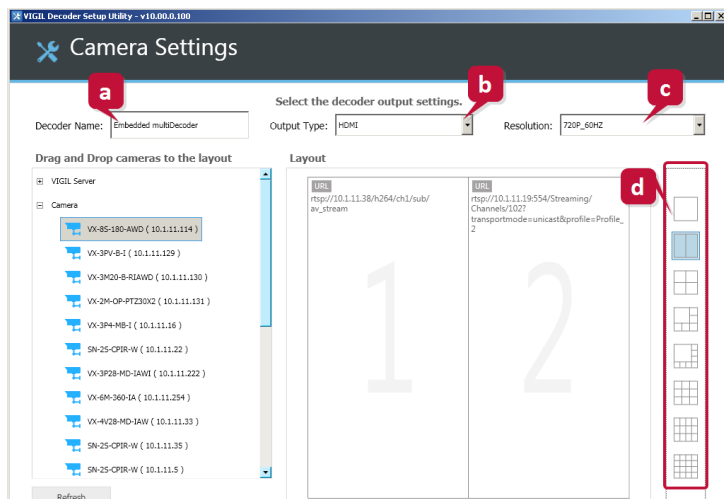
- a. To activate a new decoder, select it from the list and click the “**Activate**” button. You will need to configure the decoder login credentials to activate the device. If already activated, ask your network admin for the credentials as they are required to access and configure the decoder.
- b. To change the IP of the decoder, click the “**IP Setup**” button and enter the desired network information in the screen.



- To continue setup, click “Next” and enter the credentials configured during decoder activation. If you do not have the credentials, contact your network admin.



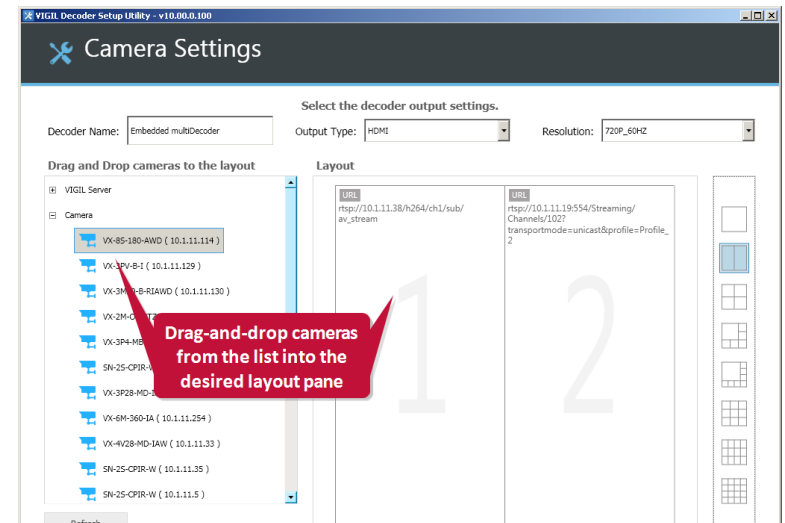
- The main camera settings page will deploy. To begin:
  - Name your decoder. The default name must be changed.
  - Select an output type. Only one output can be active.
  - Select the resolution of the monitor.
  - Choose a camera layout from the right-side layout bar.



- The Setup Utility will find all 3xLOGIC Servers and cameras available on your

network. They will be displayed in the left-hand list. Drag and drop cameras into the panes in which you wish them to reside.

- Note:** For cameras not connected to a Server, you may be prompted to supply the camera’s username and password.



- After clicking “Finish” you will have the option to restart the Setup Utility or Exit the program.

