

Tech Tip 160038

VIGIL Decoder Setup Utility – Usage and Configuration

Tech Tip #:	160038-2
Date:	September 1st, 2016
Revised:	May 3 rd , 2018
Product Affected:	VIGIL Server 10.5 and newer, VIGIL Decoder Setup Utility 10.5 and newer, VISIX VH-DECODER -1 High Definition Network Video Decoder
Purpose:	This document is intended to educate its reader on the installation, configuration and usage of the VIGIL Decoder Setup Utility.

1	INTRODUCTION.....	1
2	VIGIL DECODER SETUP UTILITY.....	1
	2.1 Installation	1
	2.2 Configuration and Operation	1
3	CONTACT INFORMATION	3

1 Introduction

The VIGIL Decoder Setup Utility had been engineered by 3xLOGIC as an easy-to-use identification and configuration tool for use with the 3xLOGIC’s VISIX VH-DECODER-1 High-Def Video Decoder. The utility can run as a standalone utility or can be launched internally from VIGIL Server; however, it must be installed independently of the VIGIL VMS.

For instructions on installing, configuring and operating the VIGIL Decoder Setup Utility, please proceed through the remaining sections of this guide.

2 VIGIL Decoder Setup Utility

2.1 Installation

To install the VIGIL Decoder Setup Utility:

1. Download the latest available version of the VIGIL Decoder Setup Utility installer (VIGIL Decoder Setup Utility vx_xx_xxxx.exe) from the 3xLOGIC Engineering Downloads page (located under *Device Integration Utilities > VIGIL Server*).
2. Launch the installer.
3. Follow the on-screen instruction to complete the installation.

2.2 Configuration and Operation



Note: JPEG Streams are not currently supported from VIGIL Server Cameras. Only H.264 is currently supported.

After installing, the VIGIL Decoder Setup utility can be run externally of the VIGIL Suite via the *Start Menu>All Program>VIGIL>Utility* folder or can be launched internally via the *VIGIL Server Settings – Decoder Setup tab*.

After clicking the launch button, the decoder setup utility will deploy. The landing page for the decoder utility is the detected decoder list.

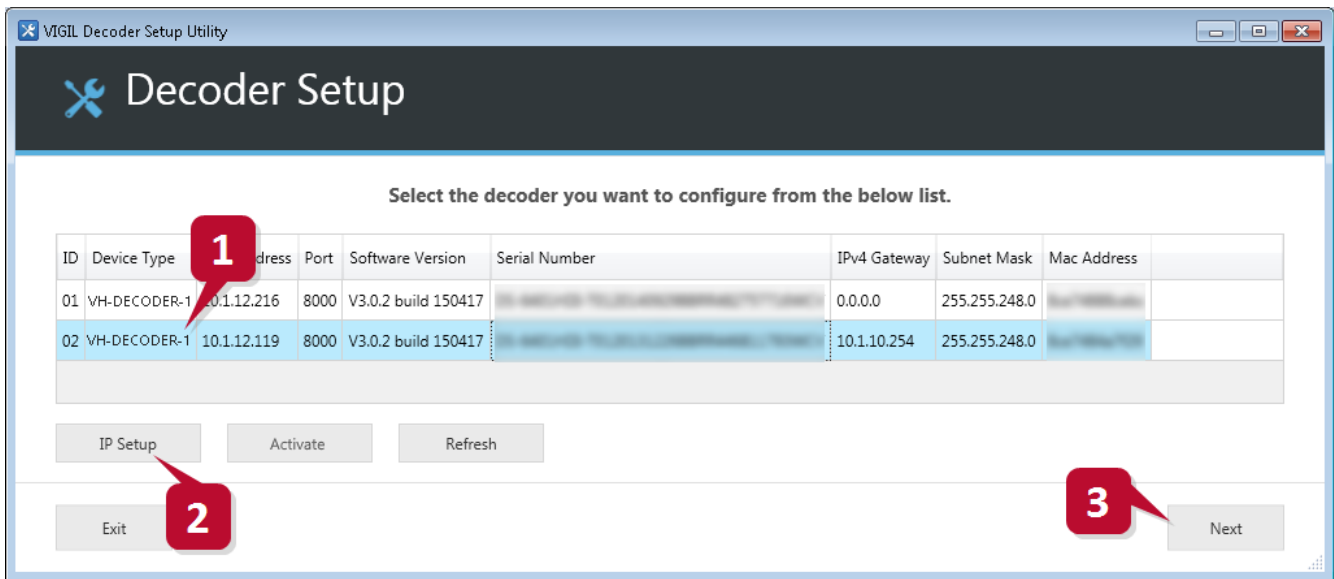


Figure 2-1: VIGIL Decoder Setup Utility - Detected Decoders

The utility will automatically detect VISIX decoders on your network and display them in the list. To update the list, click the **Refresh** button.

To activate a decoder, select the desired decoder and click **Activate**. You will need to configure the decoder login credentials to activate the device. If already activated, ask your network admin for the credentials as they are required to access and configure the decoder.

To configure a decoder's IP settings and camera layout:

1. Select the desired decoder from the list.
2. Click **IP Setup**. A small window will deploy where the user can enter new connection details (IP, Subnet Mask, Default gateway).
3. After selecting the desired decoder and configuring IP settings as desired, click **Next**.

You will be prompted to login to the selected decoder.

4. Enter the login credentials and click OK to continue. Credentials are set during the Activation process. Contact your VIGIL network admin for decoder credentials.

The Camera Settings window will deploy. From the Camera Settings window, a user may configure decoder name and output settings and well as monitor layout settings for the camera streams that will be decoded.

Field	Description
Decoder Name	The name that will be assigned to this decoder to identify it throughout the VIGIL suite.
Output Type	Select the output type to use for the decoder. Select between HDMI, BNC or VGA.
Resolution / Video Format	Select the video output resolution. Available options include XGA, SXGA, 720p, 1080p and UXGA. When BNC is the selected Output Type, this field will become the Video format field. The user may choose between PAL or NTSC, depending on the requirements of their region.



Warning: JPEG Streams are not currently supported from VIGIL Server Cameras. Only H.264 is currently supported.

After configuring settings as required:

5. Select your desired layout from the right-side layout list.

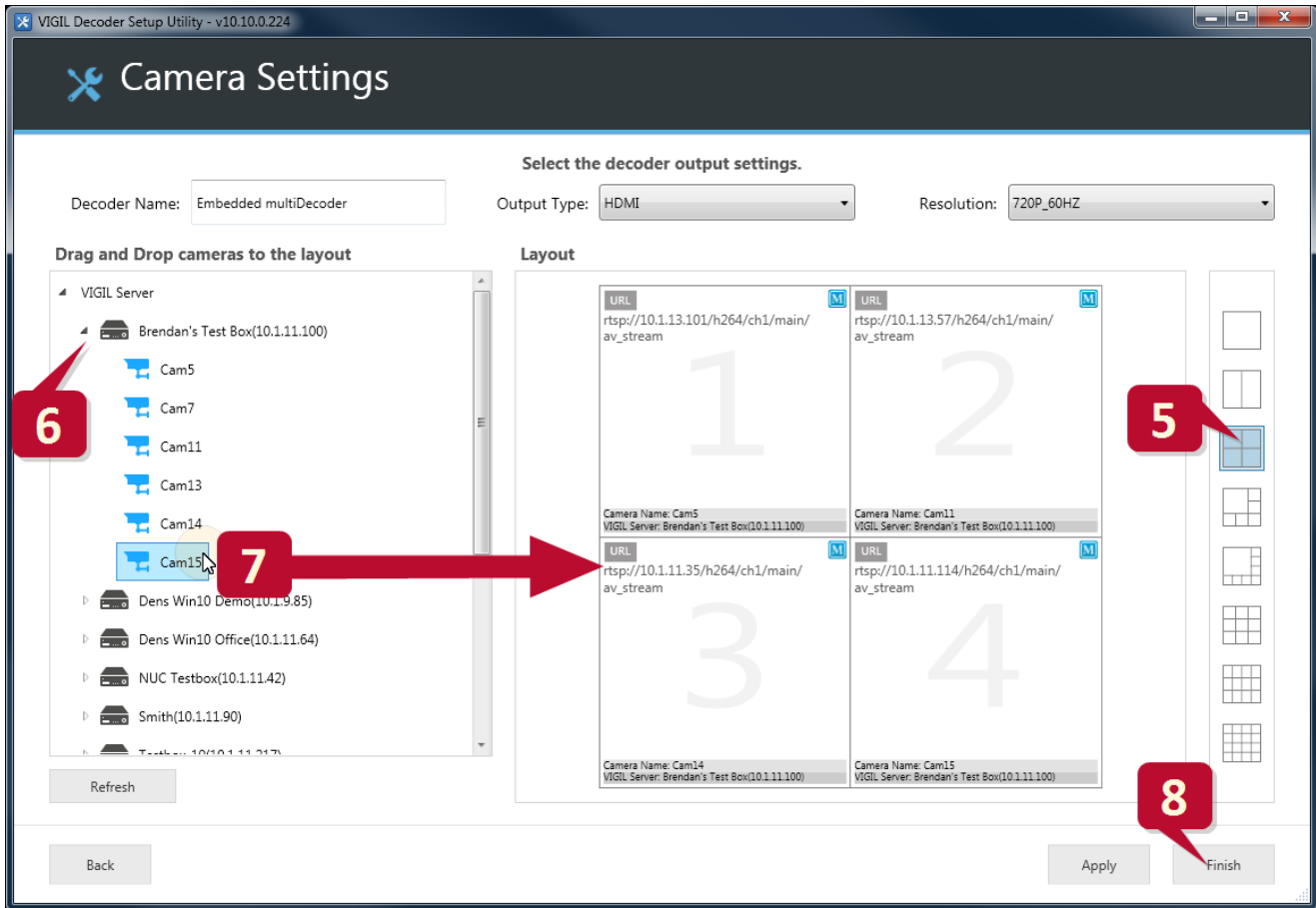


Figure 2-2: VIGIL Decoder Setup Utility - Camera Settings

6. Expand a VIGIL Server or VIGIL Camera node to reveal available cameras.
7. Drag desired cameras from the list to the desired layout frame in the preview. A stream URL will be displayed in the frame to indicate which camera stream it will display.
8. When you have configured your desired layout, click **Finish**.

Your streams will now be decoded and should be displayed on a monitor connected to the Decoder via the previously selected *Output Type*.

3 Contact Information

If you require more information, or if you have any questions or concerns, please contact 3xLOGIC Support:

Email: helpdesk@3xlogic.com

Online: www.3xlogic.com