

## Tech Tip 180010

### VIGIL Client – Understanding Bandwidth Test Results

<b>Tech Tip #:</b>	180010-1
<b>Date:</b>	March 9 <sup>th</sup> , 2018
<b>Product Affected:</b>	VIGIL Client 9.5 and newer
<b>Purpose:</b>	This document is intended to aid the reader in interpreting and understanding VIGIL Client Bandwidth Test results.

1	VIGIL CLIENT BANDWIDTH TEST .....	1
2	UNDERSTANDING BANDWIDTH TEST RESULTS .....	2
3	CONTACT INFORMATION .....	2

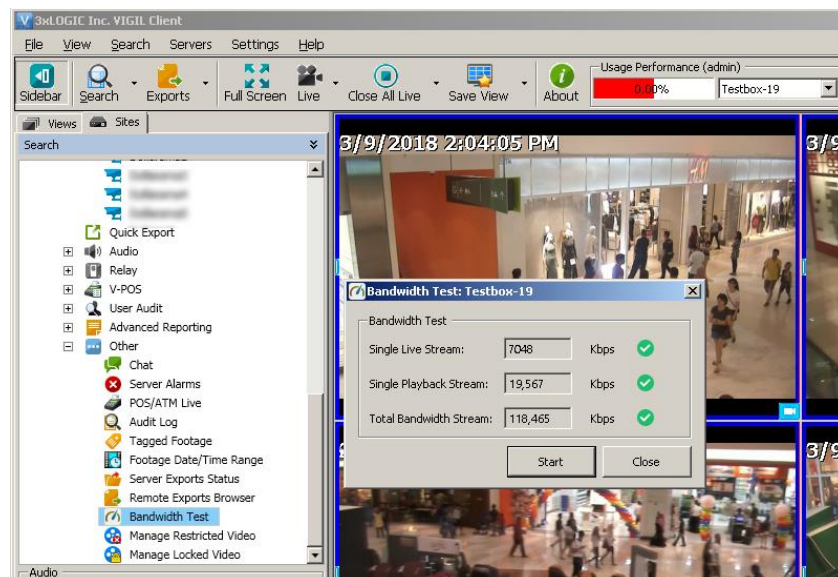
#### 1 VIGIL Client Bandwidth Test

The *Bandwidth Test* feature is a simple utility to check average bandwidth availability between VIGIL Client and the selected VIGIL Server site and will notify a user if an insufficient bandwidth issue exists.

The test will produce separate bandwidth availability averages for the following three stream criteria:

- **Single Live Stream** - The average amount of available bandwidth for a single camera live stream.
- **Single Playback Stream** - The average amount of available bandwidth for a single camera playback stream.
- **Total Bandwidth Stream** - The total available bandwidth average.

Double-click the *Bandwidth Test* option in the treewiew to open the utility.



## 2 Understanding Bandwidth Test Results

When the test has begun, progress will be indicated via the gauge icons. Available bandwidth averages will be listed in the corresponding fields (Kbps / Kilobytes per second). A green check-mark indicates sufficient bandwidth exists for the corresponding stream type. A red x icon indicates a failure to connect or insufficient bandwidth.

Bandwidth ranges are graded below:

	Low	Med	High
Single Live Stream	250Kbps – 2048Kbps	2048Kbps – 50000Kbps	50000Kbps or more
Single Playback Stream	250Kbps– 2048Kbps	2048Kbps – 50000Kbps	50000Kbps or more
Total Bandwidth Stream	512Kbps – 3048Kbps	3048Kbps – 70000Kbps	70000Kbps or more

- **LOW** - The system will work but you will most likely not be able to stream video in real time and playback will be very slow.
- **MED** - The system will function but viewing more than one camera in live mode and playback will be noticeably slow.
- **HIGH** - The system will be able to stream multiple cameras in real time as well as multiple cameras on playback.

## 3 Contact Information

If you require more information, or if you have any questions or concerns, please contact 3xLOGIC Support:

Email: [helpdesk@3xlogic.com](mailto:helpdesk@3xlogic.com)

Online: [www.3xlogic.com](http://www.3xlogic.com)