

### VIGIL Server – Ideal Market POS Parser – Configuration and Usage

<b>Tech Tip #:</b>	160044-2
<b>Revised:</b>	September 30 <sup>th</sup> , 2016
<b>Product Affected:</b>	VIGIL Server 8 and 9 Series (or newer), VIGIL Ideal Market POS Journal Sender Utility, Ideal Market POS Parser.
<b>Purpose:</b>	This document is intended to instruct the reader on the process of configuring VIGIL Server for use with an Ideal Market IP POS system.

<b>1</b>	<b>INTRODUCTION.....</b>	<b>1</b>
1.1	Version Requirements.....	1
1.1.1	VIGIL 9 Series.....	1
1.1.2	VIGIL 8 Series.....	1
<b>2</b>	<b>INTERFACING THE IDEAL MARKET POS SYSTEM WITH VIGIL SERVER .....</b>	<b>2</b>
2.1	Configuring VIGIL Server POS Settings .....	2
2.2	Configuring VIGIL Generic POS Sender Utility on the Ideal Market POS System.....	2
<b>3</b>	<b>CONTACT INFORMATION .....</b>	<b>4</b>

#### 1 Introduction

VIGIL Server 8 and 9 series (and newer) systems can be interfaced with the Ideal Market POS system with the use of the VIGIL Ideal Market POS Journal Sender Utility. This utility reads the Ideal Market POS Journal files on the local POS system and is configured to relay the data located in the journal files to a VIGIL Server on the same network. VIGIL Server then parses this data and inserts it into the VIGIL POS Database.

For instructions on configuring VIGIL Server and the VIGIL Ideal Market POS Journal Sender Utility for use with the Ideal Market IP POS system, proceed through the remaining sections of this guide.

##### 1.1 Version Requirements

Both VIGIL 8 and 9 Series systems can support the Ideal Market IP POS System, however, separate DLL updates are required depending on the VIGIL series your system has installed.

###### 1.1.1 VIGIL 9 Series

If you are using a VIGIL 9.5 system or newer, no DLL update is required. Full support for the Ideal Market POS system is available by default. Please proceed to the next section of this guide for further setup instructions.

If you are using a VIGIL 9 Series build that predates v9.5 (9.00.0000-9.00.0600), then a POS DLL update is required for Ideal Market POS support. The **VigilServerUpdate (POS) v9\_40\_0258.vgl** update (or newer) must be run on the VIGIL Server system to add the required functionality. Contact your 3xLOGIC representative for the latest available version of the update.

###### 1.1.2 VIGIL 8 Series

If you are using a VIGIL 8 Series build, a POS DLL update is required for Ideal Market POS support. **VigilServerUpdate(POS) v8\_50\_0222.vgl** update must be run on the VIGIL Server system to add the required functionality. Contact your 3xLOGIC representative for the latest available version of the update.

## 2 Interfacing the Ideal Market POS System with VIGIL Server

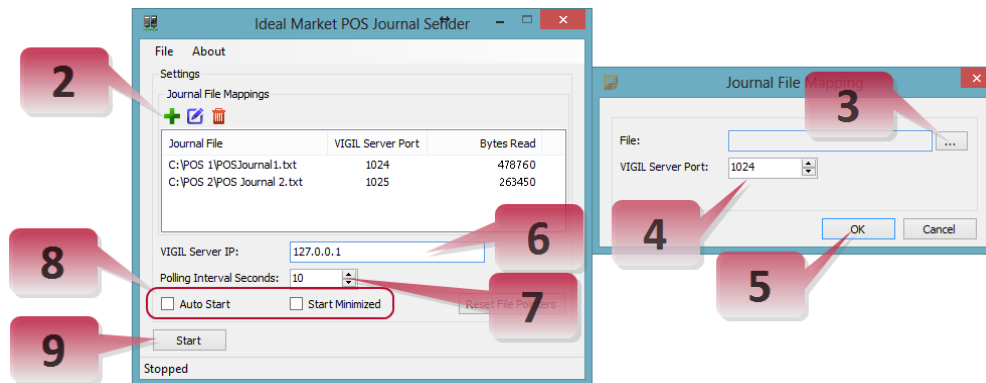
After confirming version compatibility and installing any required updates, setup may commence. Configuration steps will be required on both the Ideal Market POS System's Windows OS and the VIGIL Server system. Proceed through the remaining sections of this guide for instruction on interfacing a VIGIL Server with the Ideal Market POS system.


### 2.1 Configuring VIGIL Ideal Market POS Journal Sender on the Ideal Market POS System

The VIGIL Ideal Market POS Journal Sender program must be deployed on the Ideal Market POS system's Windows OS. This utility will read each individual POS Journal file being created by the Ideal Market POS system and will relay the information to VIGIL Server to be parsed and placed in the VIGIL POS Database. Each individual POS journal file will require its own POS Connection configuration in VIGIL Server. See Section 2.2 for information on VIGIL-side configuration.

To begin the configuration process:

1. Launch the Ideal Market POS Journal Sender. Download [here](#) or contact 3xLOGIC for the latest available version.



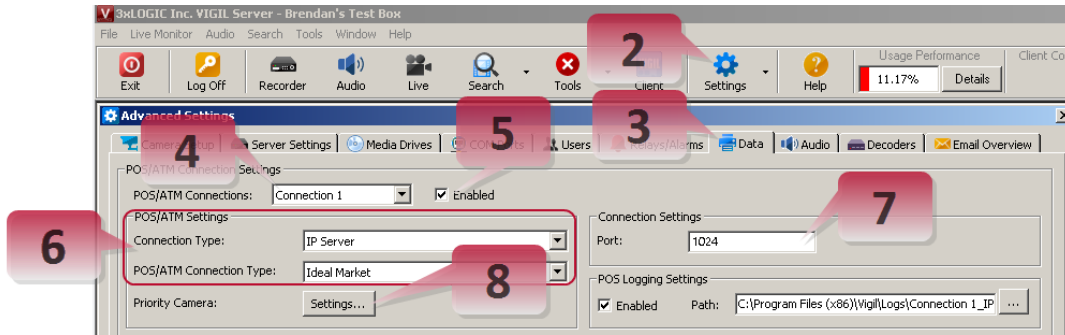
2. Click the **Add**  icon to deploy the *Journal File Mapping* window: A Journal File Mapping tells the sender utility the location of a POS Journal file. For each POS Journal file created by the Ideal Market system, a separate mapping must be created.
3. Click the ... button. Use the file explorer to define the file path of the desired POS Journal file.
4. Enter a custom **VIGIL Server Port**. A unique port number is required for each POS Journal file mapping. Take note of port value as this will be required when configuring corresponding POS Connection settings in VIGIL Server.
5. Click **OK** to save the new journal mapping. Repeat steps 2-5 for all required journal files.
6. Enter the **VIGIL Server IP Address**. If the VIGIL Server and Ideal Market POS are located on the same system, use the default local address (127.0.0.1).
7. Set a **Polling Interval**. This number (in seconds) designates how often the Sender utility will check the POS Journals for new data.
8. If desired, select startup options. *Auto Start* will start the utility on Windows startup. *Start Minimized* starts the utility in minimized mode on Windows startup.
9. Click **Start**. The sender will now begin reading the POS files and sending the appropriate POS data over the defined port for each mapping. After VIGIL Server-side settings are configured, the VIGIL Server will now begin receiving data.

Configuration on the Ideal Market POS system is now complete.

## 2.2 Configuring VIGIL Server POS Settings

After configuring the VIGIL Ideal Market POS Journal Sender utility, VIGIL Server POS Connections must be configured for each individual journal file mapping created in the sender utility. To begin:

1. Launch and login to the VIGIL Server software.



2. Click **Settings** in the icon menu toolbar.
3. Select the **Data** tab.
4. Choose a **POS/ATM Connection** from the available drop-down menu to associate with the desired POS Journal mapping configured in the previous section. (**Connection 1** is selected in the example above). Ideal Market POS Data does not contain host register information. If you require register identification along with the POS data, select a Connection number that corresponds with the desired register's number.



**Example:** A site has registers marked 7, 8 and 9. As expected, data for each register is contained in a separate POS Journal. Configuring VIGIL Server POS Connection 7, 8 and 9 to correspond with the register of the same number can help to quickly identify the host register when viewing the POS data.

5. Toggle the **Enabled** checkbox to enable the chosen connection.
6. Under the **POS/ATM Settings** section, choose **IP Server** as the **Connection Type** and **Ideal Market** as the **POS/ATM Connection Type**.
7. Set the **Port** value to match the port configured for the target journal mapping, configured in Step 4 of Section 2.1. In the above example, **1024** has been entered.
8. If desired, click the **Priority Camera Settings** button to launch the priority camera settings window. A POS Connection Priority Camera is generally the camera overlooking the register associated with the connection data. This will also allow an on-screen display of POS/ATM data for the selected camera when viewing live and playback footage in VIGIL Server.
9. Repeat the above steps for each journal mapping configured in the VIGIL Ideal Market POS Journal Sender utility.
10. Click **OK** at the bottom of the **Settings** window to save the newly configured POS Connection settings and exit the settings window.

After configuring the POS Connection settings, check the VIGIL Server's Live POS/ATM Data to confirm data is being received (Step 9 in Section 2.1 is required). . Enable OSD (On-Screen Display) on any of your configured priority cameras (configured in Step 8 of this section) to enable a live overlay of the associated POS data.

### 3 Contact Information

If you require more information, or if you have any questions or concerns, please contact 3xLOGIC Support:

Email: [helpdesk@3xlogic.com](mailto:helpdesk@3xlogic.com)

Online: [www.3xlogic.com](http://www.3xlogic.com)